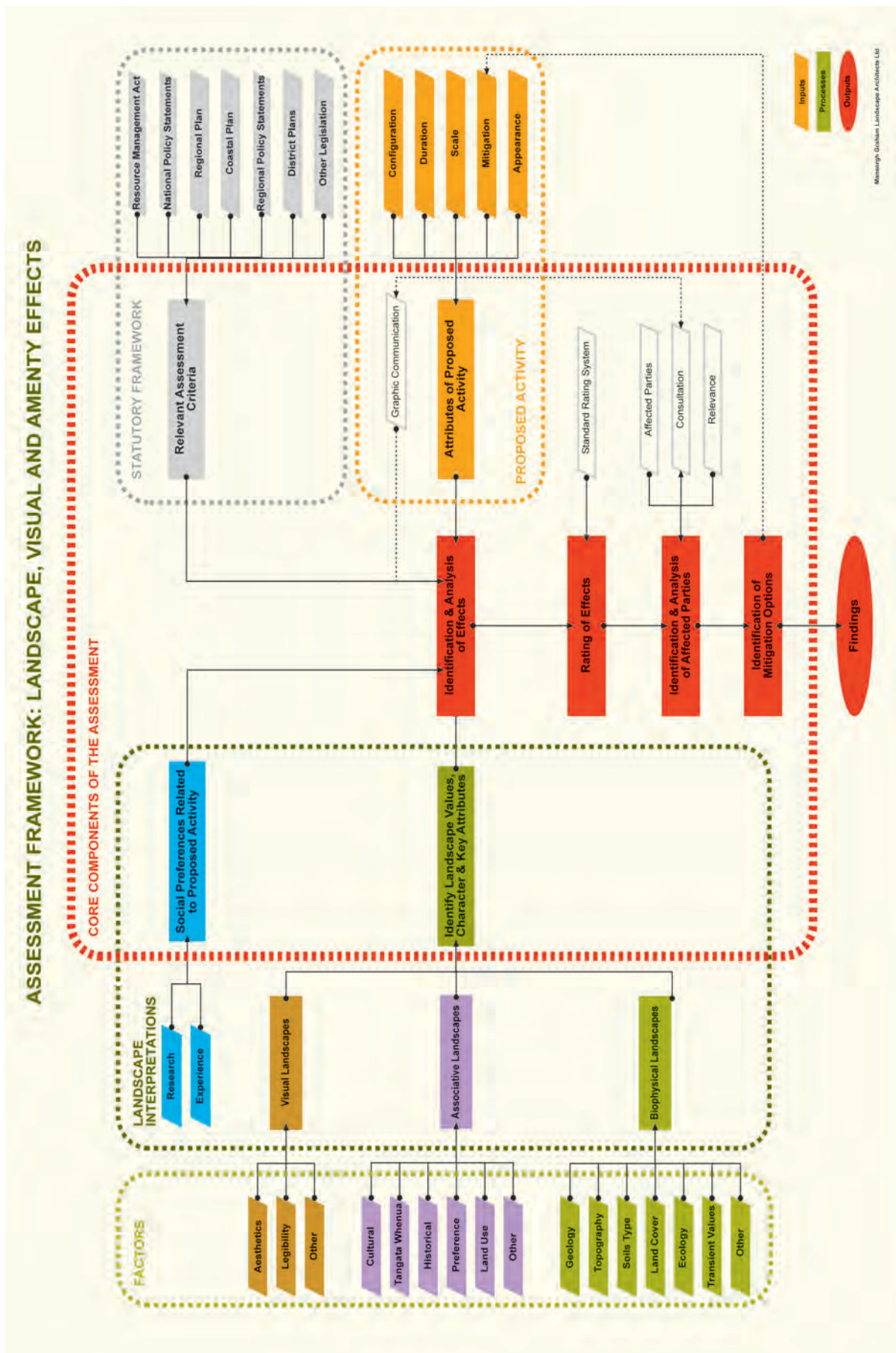


Appendix One: Methodological Flow Chart

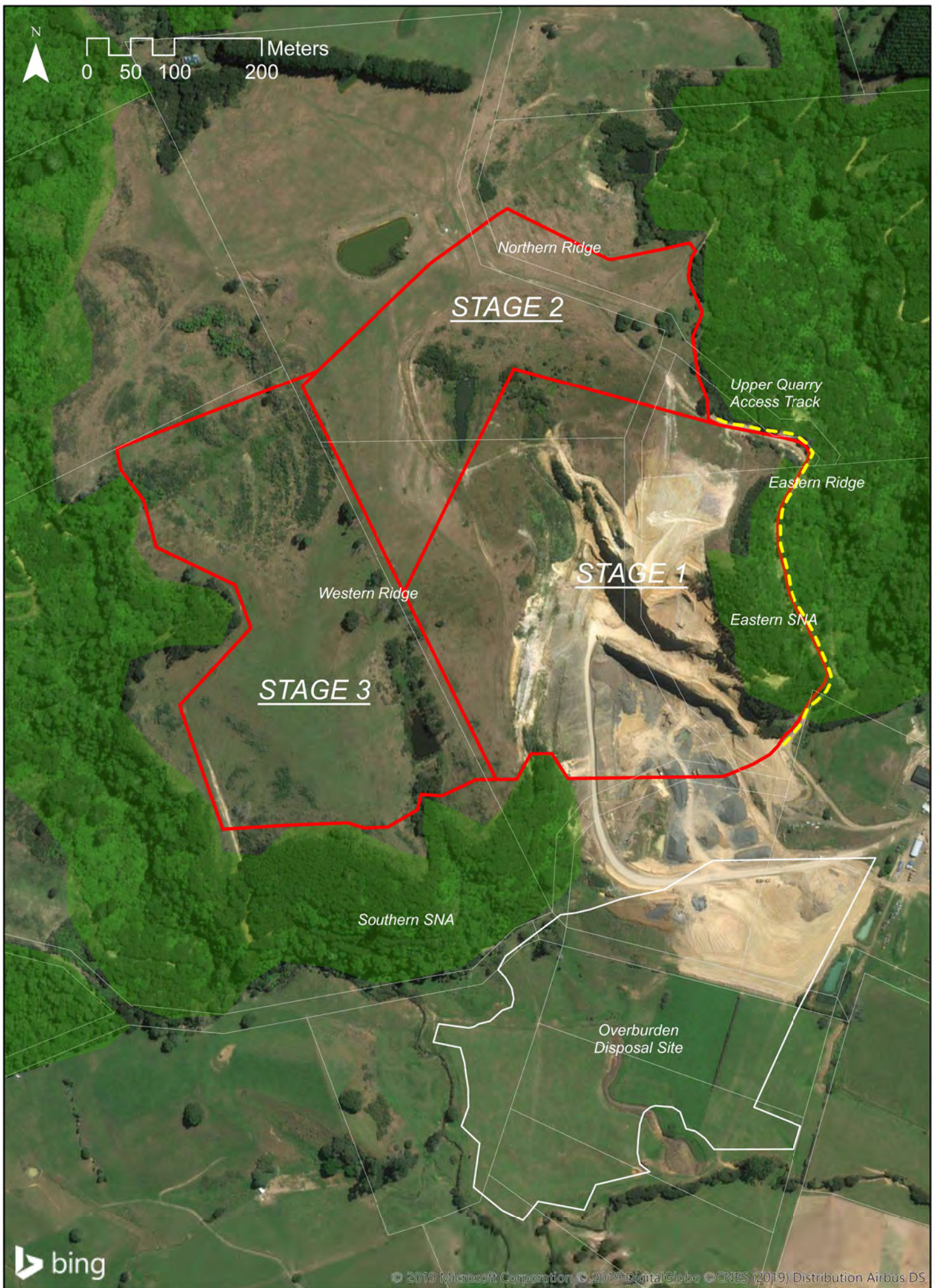


Appendix Two: Landscape and Visual Amenity Effect - Rating System

LANDSCAPE AND VISUAL AMENITY EFFECT - RATING SYSTEM	
Effects Rating	Use and Definition
Extreme	<p><u>Use</u> The development/activity would:</p> <ul style="list-style-type: none"> a. Result in an extreme change on the characteristics or key attributes of the receiving environment and/or the vista within which it is seen; and/or b. Have an extreme effect on the perceived amenity derived from it. <p><u>Oxford English Dictionary Definition</u> Extreme: adjective 1 utmost. 2 reaching a high or the highest degree.</p>
Very High	<p><u>Use</u> The development/activity would:</p> <ul style="list-style-type: none"> c. Have a very high level of effect on the character or key attributes of the receiving environment and/or the vista within which it is seen; and/or d. Have a very high level effect on the perceived amenity derived from it. <p><u>Oxford English Dictionary Definition</u> Very: adverb 1 in a high degree. 2 with superlative or own without qualification: the very best quality. High: adjective 1 extending above the normal level. 2 great in amount, value, size, or intensity. 3 great in rank or status. 4 morally or culturally superior.</p>
High	<p><u>Use</u> The development/activity would:</p> <ul style="list-style-type: none"> e. Have a high level of effect on the character or key attributes of the receiving environment and/or the vista within which it is seen; and/or f. Have a high level of effect on the perceived amenity derived from it. <p><u>Oxford English Dictionary Definition</u> High: adjective 1 extending above the normal level. 2 great in amount, value, size, or intensity. 3 great in rank or status. 4 morally or culturally superior.</p>
Moderate	<p><u>Use</u> The development/activity would:</p> <ul style="list-style-type: none"> g. Have a moderate level of effect on the character or key attributes of the receiving environment and/or the vista within which it is seen; and/or h. Have a moderate level of effect on the perceived amenity derived from it. <p><u>Oxford English Dictionary Definition</u> Moderate: adjective 1 average in amount, intensity, or degree.</p>
<p>“Minor” Threshold Under the RMA. Ratings above this threshold are “More than Minor”. Ratings below this threshold are “Less than Minor”. Low-Moderate ratings are “Minor”.</p>	
Low	<p><u>Use</u> The development/activity would:</p> <ul style="list-style-type: none"> i. Have an low level of effect on the character or key attributes of the receiving environment and/or the vista within which it is seen; and/or j. Have a low level of effect on the perceived amenity derived from it. <p><u>Oxford English Dictionary Definition</u> Low: adjective 1 below average in amount, extent, or intensity. 2 lacking importance, prestige, or quality; inferior.</p>
Very Low	<p><u>Use</u> The development/activity would:</p> <ul style="list-style-type: none"> k. Have a very low level of effect on the character or key attributes of the receiving environment and/or the vista within which it is seen; and/or l. Have a very low level of effect on the perceived amenity derived from it. <p><u>Oxford English Dictionary Definition</u> Very: adverb 1 in a high degree. 2 with superlative or own without qualification: the very best quality. Low: adjective 1 below average in amount, extent, or intensity. 2 lacking importance, prestige, or quality; inferior.</p>
Negligible	<p><u>Use</u> The development/activity would:</p> <ul style="list-style-type: none"> m. Have a negligible effect on the character or key attributes of the receiving environment and/or the vista within which it is seen; and/or n. Have a negligible effect on the perceived amenity derived from it. <p><u>Oxford English Dictionary Definition</u> Negligible: adjective that need not be considered.</p>
Detectable Effect Threshold	
No Effect	The development/activity would have no effect on the receiving environment.
Note: Ratings may be positive (e.g. high level of enhancement) or negative (e.g. high adverse effect).	

Appendix Three: Visual Absorption Capability Ratings

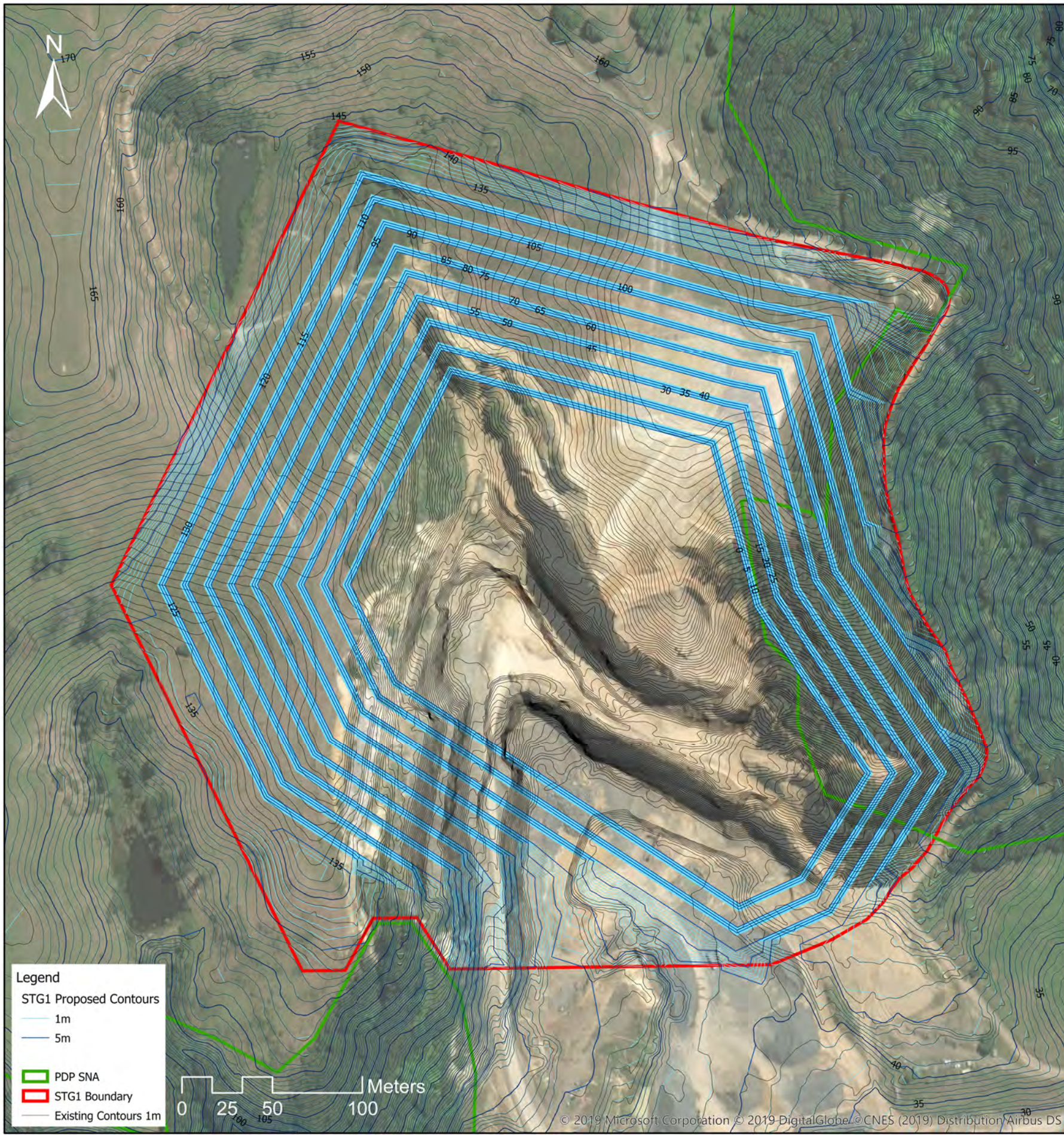
Visual Absorption Capability Definition Ratings	
VAC Rating	Use
Very Good	<p>The proposed development/activity would be completely screened, almost completely screened or completely absorbed by existing landscape features. Any views of the development would be either unidentifiable or at a great distance, and/or;</p> <p>The development/activity would not affect the existing character of the surrounding landscape or view in which it is seen, and/or;</p> <p>The development/activity would introduce a visual element into the landscape or view which may be viewed very frequently or continuously in that or similar landscape types.</p>
Good	<p>The proposed development/activity would be mostly screened or visually absorbed by existing landscape features, but still be identifiable. The development/activity may act as a tertiary focal attraction within the landscape or view in which it is seen, and/or;</p> <p>The development/activity would not affect the existing character of the surrounding landscape or view in which it is seen, and/or;</p> <p>The development/activity may introduce a visual element into the landscape or view which may be viewed frequently in that or similar landscape types.</p>
Neutral	<p>The proposed development/activity would neither be screened nor become a visual intrusion or focal attraction within the landscape or view in which it is seen. The proposed development/activity may act as a minor focal attraction from some locations, and/or;</p> <p>The development/activity would alter the existing character of the surrounding landscape or view in which it is seen, and/or;</p> <p>The development/activity would introduce a visual element into the landscape or view which may be viewed occasionally in that or similar landscape types.</p>
Poor	<p>The proposed development/activity would be clearly visible but would not act as a primary focal attraction, and/or;</p> <p>It would be expected that the proposed development/activity would alter the existing character of the surrounding landscape or view in which it is seen, and/or;</p> <p>The development/activity may introduce a new visual element into the landscape or view. The development/activity may be viewed infrequently in that or similar landscape types.</p>
Very Poor	<p>The proposed development/activity will be highly visible and may act as a primary focal attraction or feature. It would also be expected that the proposed development/activity will significantly alter the existing character of the surrounding landscape or view in which it is seen, and/or;</p> <p>The development/activity will introduce a new visual element into the landscape or view, which will be significantly different in appearance, or scale from the landscape elements surrounding it, and/or;</p> <p>The development/activity would be found very rarely in that or similar landscape types.</p>



AMENDED STAGING PLAN - PROPOSED STAGES (1-3)

McPHERSON QUARRY | SCALE 1:5,500 AT A4 | NOVEMBER 2019 | MAP NO-1 | RD

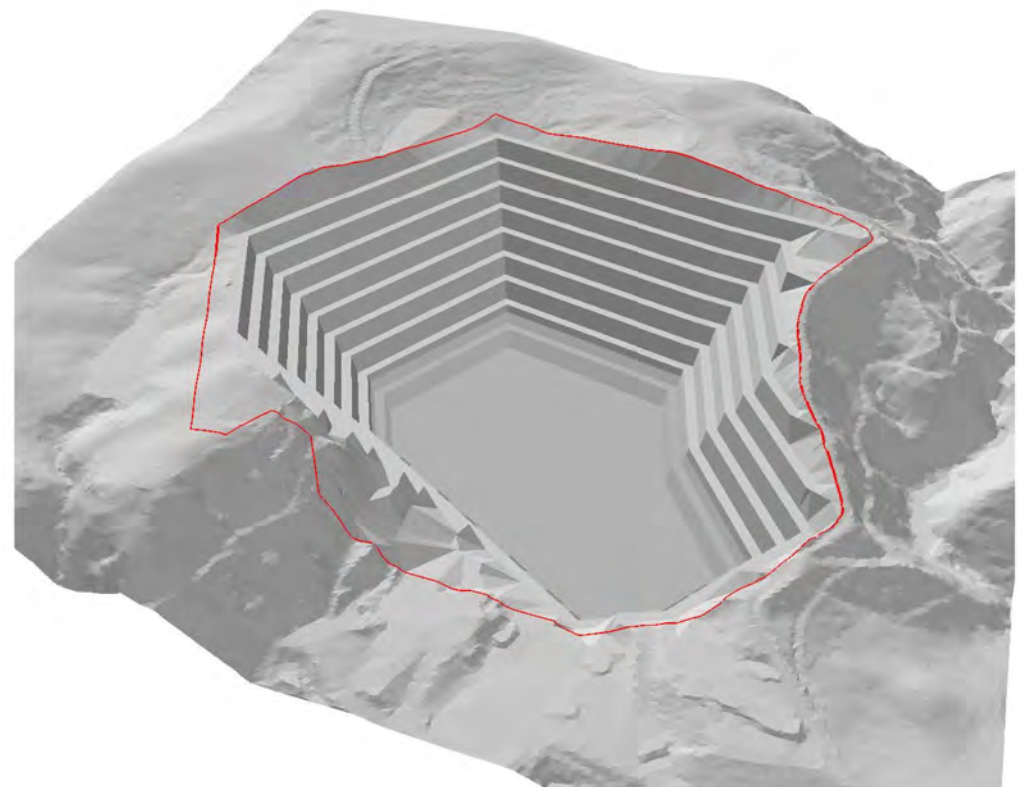




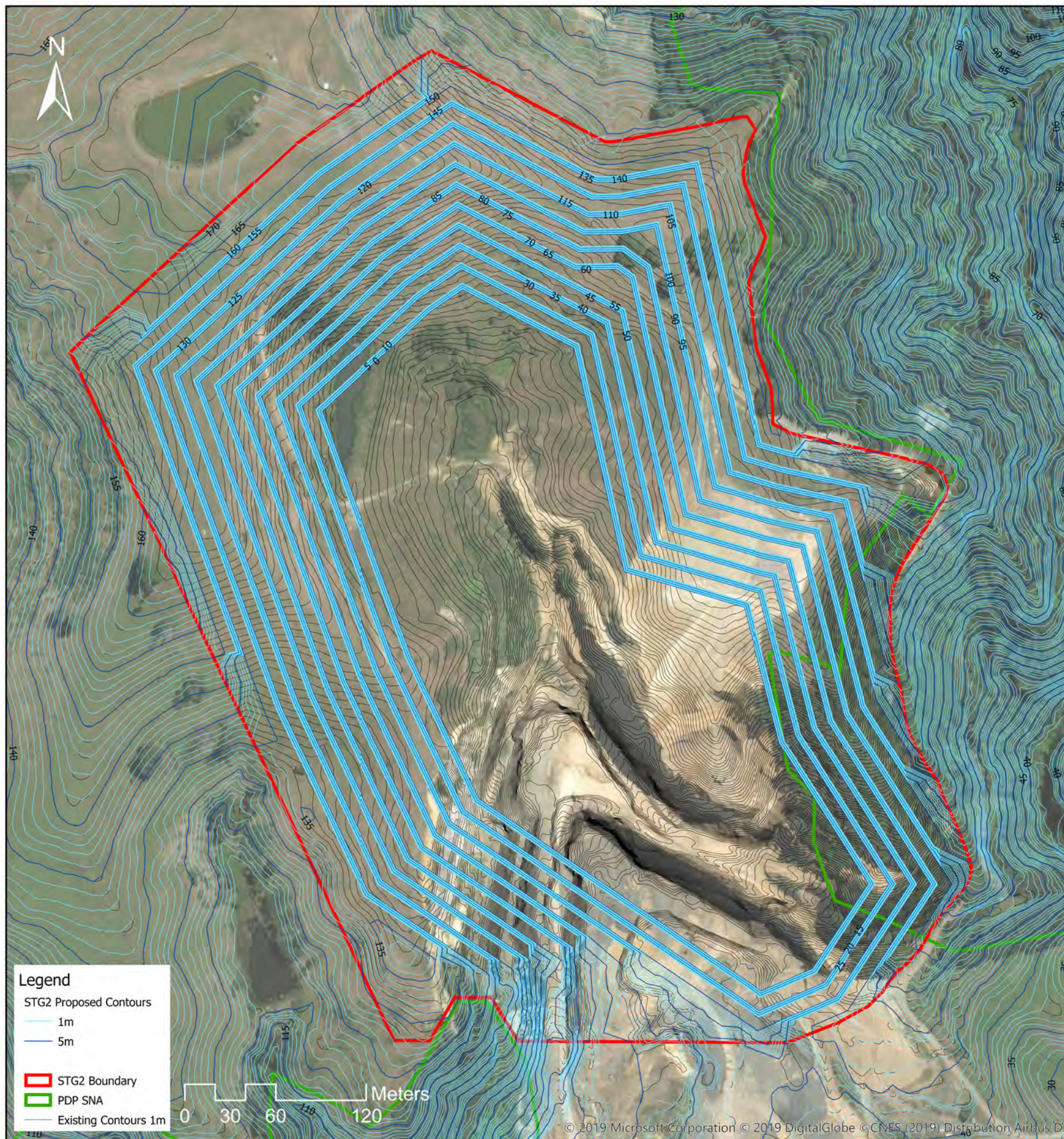
Stage 1 Proposed Contours | Plan View | Scale 1:2,500



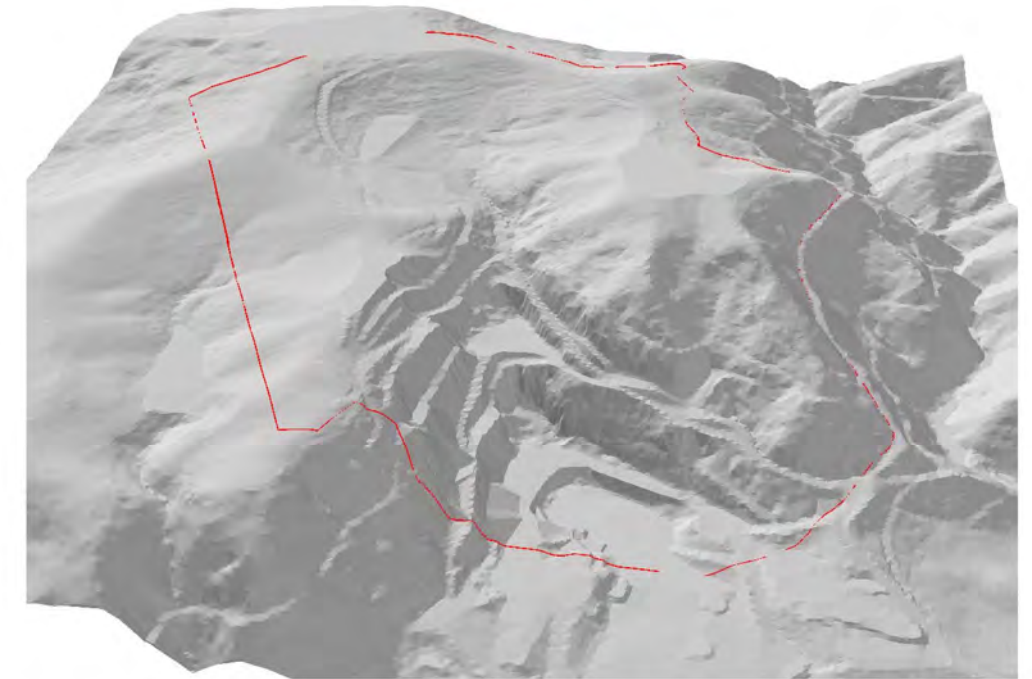
Existing Topography | 3D Perspective



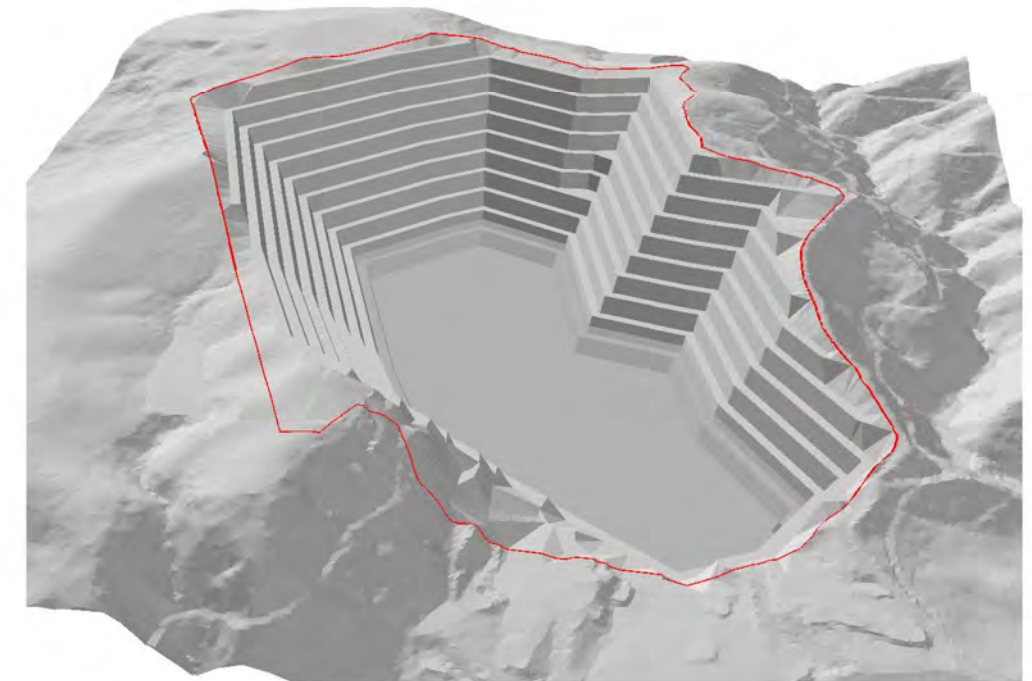
Stage 1 Proposed Contours | 3D Perspective



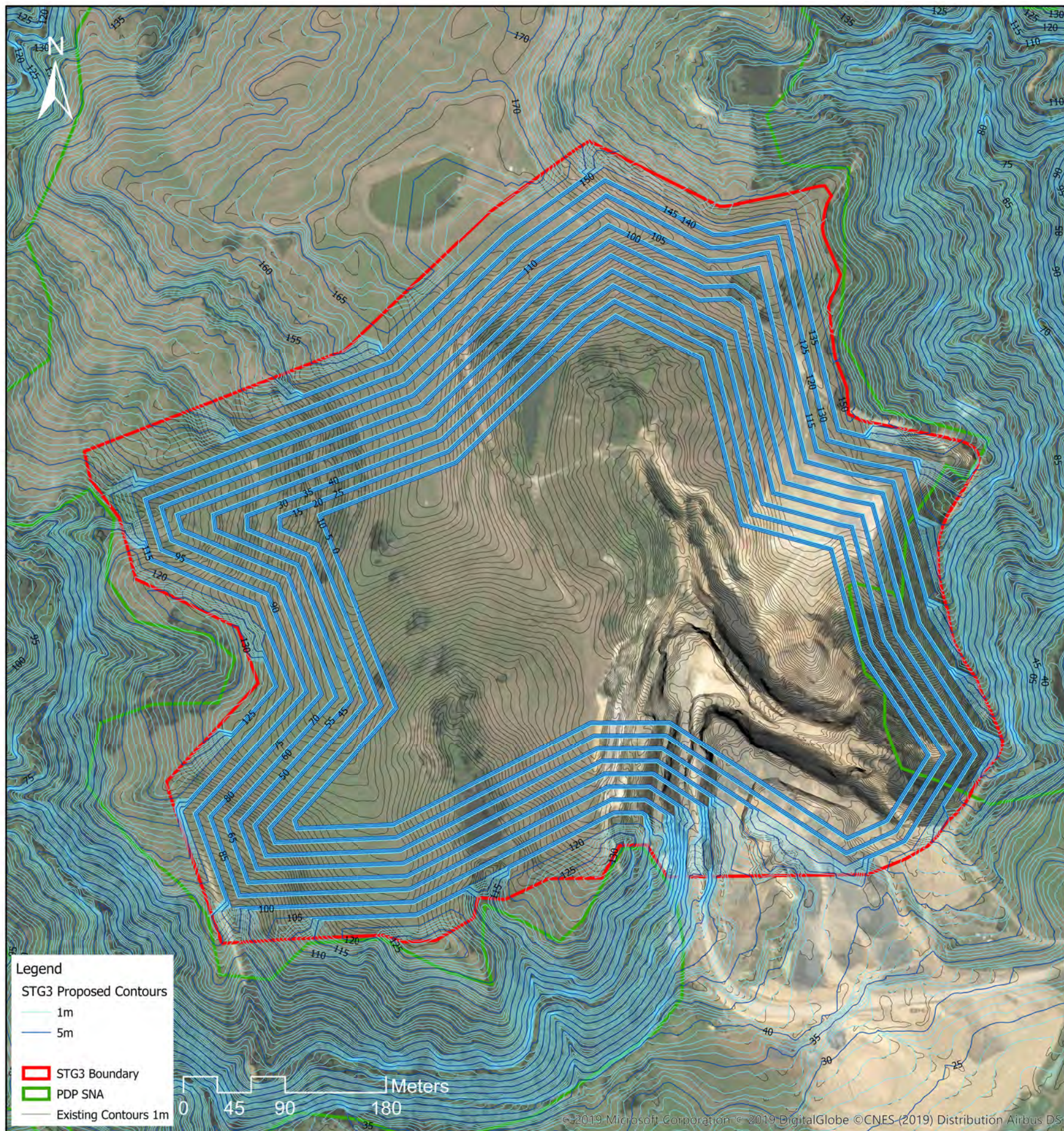
Stage 2 Proposed Contours | Plan View | Scale 1:3,000



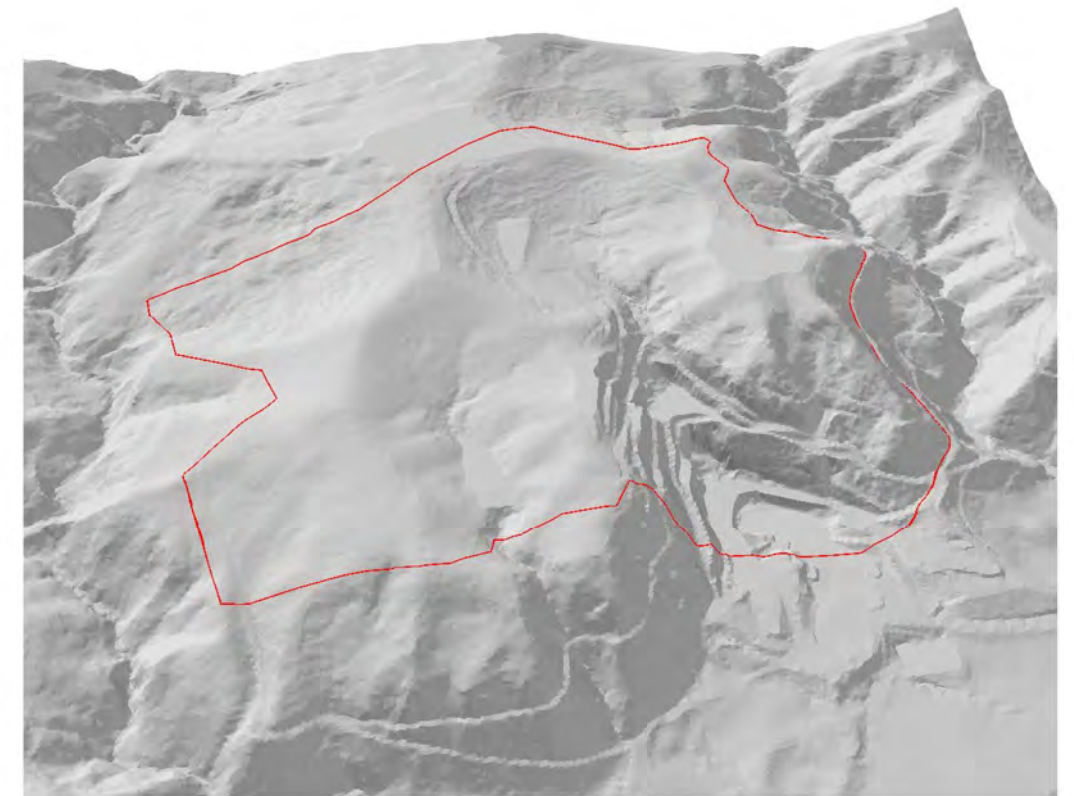
Existing Topography | 3D Perspective



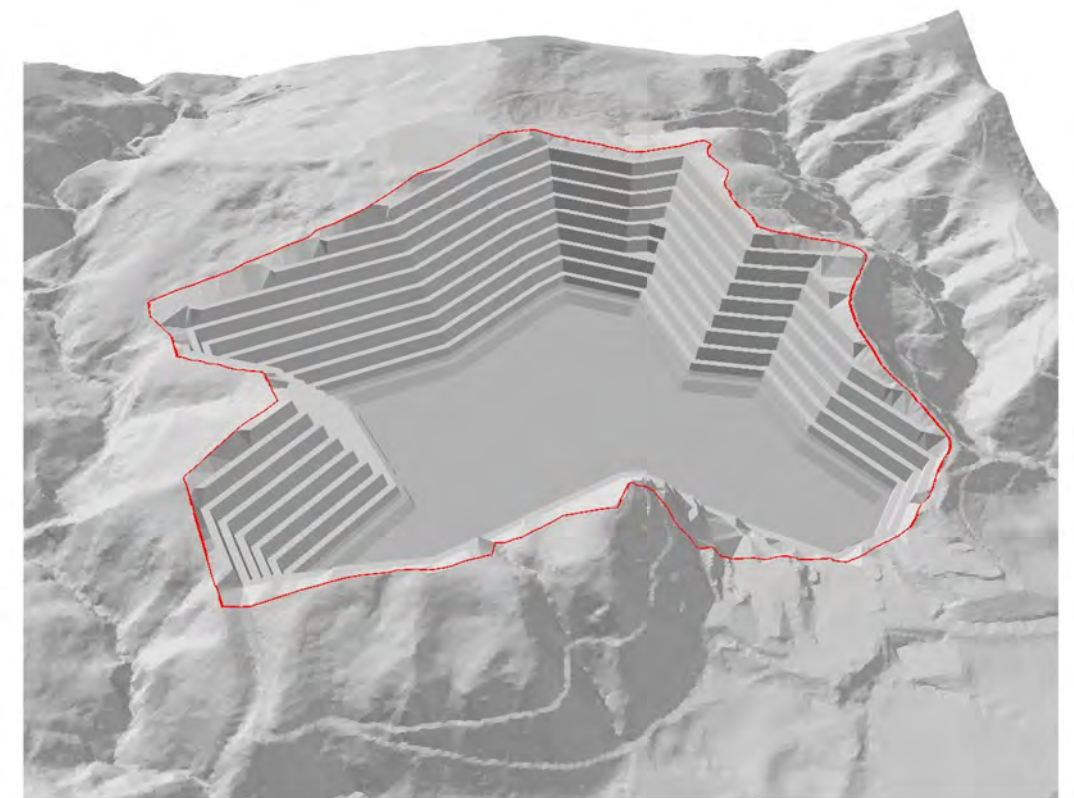
Stage 2 Proposed Contours | 3D Perspective



Stage 3 Proposed Contours | Plan View | Scale 1:4,000



Existing Topography | 3D Perspective



Stage 3 Proposed Contours | 3D Perspective

