

Intention to lease Scout Hall Hakanoa Domain

Brief Intention of use

An open, vibrant, creative, supportive, and experimental space for arts, crafts and wellbeing

Arts and culture play a vital role in enabling thriving **communities**.

To have an active community arts space where people feel 'enabled'. A space where people who experience barriers to opportunities are welcomed and set on a path for growth, within our art space and out in the community.

Duration - Long term permanent

Full outline of intended use

We intend to use the council owned building to open a community arts centre.

It will be used for a variety of workshops as well as being open to the public to drop in, exhibitions, shows, resident artist opportunities, the possibilities are endless once we have a specific space for creative activity.

The location opens up a whole range of possibilities for the arts as well. Imagine painting outdoors on the lakeside without having to lug all the equipment or having to pack the car.

The storage alone will make it so much easier to hold creative activity. Currently we are working out of two community houses and have to fit in with all their other activities and groups that use the spaces. Just being able to leave art out to dry in a safe arts environment will mean so much to the artists that we interact with.

Statement outlining how the council asset will benefit the whole community

The idea behind this lease application is to enable the Creative Huntly programme to expand into its own space. We want to develop a community-wide arts hub based at the domain. That truly reflects the aspirations and needs of existing arts groups, audiences as well as creatives who are based in Huntly. While taking stock of what is already happening on the ground- with the numerous independent arts organisations and informal groups that are already engaged in community arts projects and programmes. We want to create a space that is open and welcoming to all interested in the arts that they feel like they can use and drop into at any time.

Creative spaces are organisations and places where people who experience barriers to participation can make art, or participate in artistic activities. Barriers to participation in our community include learning or physical disability, neurological conditions, mental ill health, age-related vulnerability (elderly or youth at risk), cultural isolation or poverty.

We are already engaging many of our community members but feel that with a specific creative space to use we will be able to engage even more and grow the Huntly Arts further.

We want to provide a space with resources and assistance that will lead to self-expression, empowerment and self-development through making art or participating in artistic activities.

There are many creative spaces in communities throughout New Zealand. Some encourage an informal, drop-in approach while others prefer a structured approach, with programmes and workshops.

Our Community Art Space will be a mixture of these two models with staff onsite during working hours to support both drop ins and workshops.

The arts are intrinsically valuable. We share our dreams, we share our pasts and imagine our futures through our arts. They confront us and challenge us, comfort and inspire us. They are how we communicate.

Everyone, regardless of ability, should be able to have access to, to participate in and enjoy the arts. Creative expression is fundamental to exploring and developing our sense of who we are, how we relate to each other, and the world around us.

Creative Spaces encourage inclusion for individuals who might otherwise not be included in society. They give opportunities for individuals to express who they are and where they are, and where they want to be in the future.

They allow us to work in large groups, in smaller partnerships and on individual projects – whichever suits us best.

Importantly, Creative Spaces give people choice.

Us

Friendship House (Huntly) Community Charitable Trust became a legal entity in 2011 to govern Friendship House which has been operating as a community centre since 2005 with the mission to provide a safe resource centre to help our community thrive. Our Trust board is made up of 8 community members and comprises a chairperson, deputy, treasurer and secretary. They meet no less than 6 times a year and follow guidelines, rules and policies laid out in the trust deed and NZ law around operating a community based charitable trust. They guide and assist the operational staff made up of a manager, coordinator, kaiāwhina and arts coordinator.

Budget

Our current art activities and staff are funded by Creative Communities NZ through WDC, Lotteries, Trust Waikato and WEL Energy Trust.

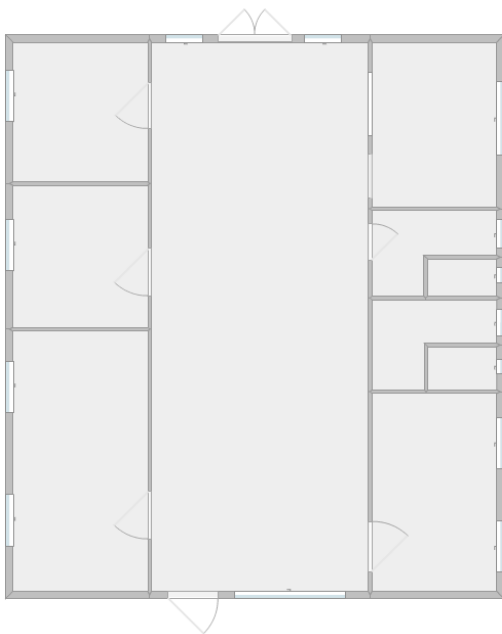
Other funding opportunities open up with a space for the arts, our Trust will apply for funding to increase staffing, workshops and upgrade the premises as needed.

Scout Building Proposal 2023

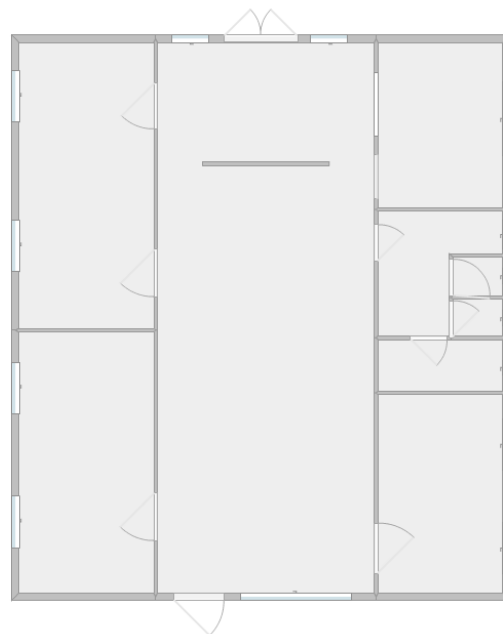


17 Park Ave, Huntly - The Huntly Scout building has not been utilised in many years and in this proposal we wish to show you how this space can be used and benefited by the community.

Due to the lack of use, the building is in need of some maintenance and updating for the community to fully utilise the space. For example, wheelchair access -The first image is the original floor plan for the hall and the second image is the revised floor plan we are proposing.



Original Floor Plan



Revised Floor Plan

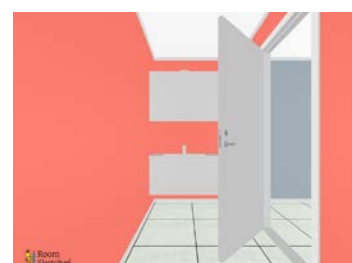
As you can see in the revised floor plan, we propose removing the wall between the offices to create one communal office space. We have also added a partition wall near the entrance to create a front desk area where visitors can be greeted and signed in. Lastly the bathroom has been changed to open it into one space with two stalls and one disability toilet that also can act as a parental room.



By opening up the office space and making it a communal office - it creates a more productive workspace for all involved and creates an opportunity to utilise the space more.



By adding a partition wall a new space can be created to make a reception or front of house area, where people can be greeted and sign in.



The bathroom is currently in two parts - but if it can be combined into one large bathroom, it can be opened up to include a disabled stall that also has space for a parental changing station along with two standard toilet stalls.



The kitchen will also need some updating, as many community events will require the use of a kitchen.



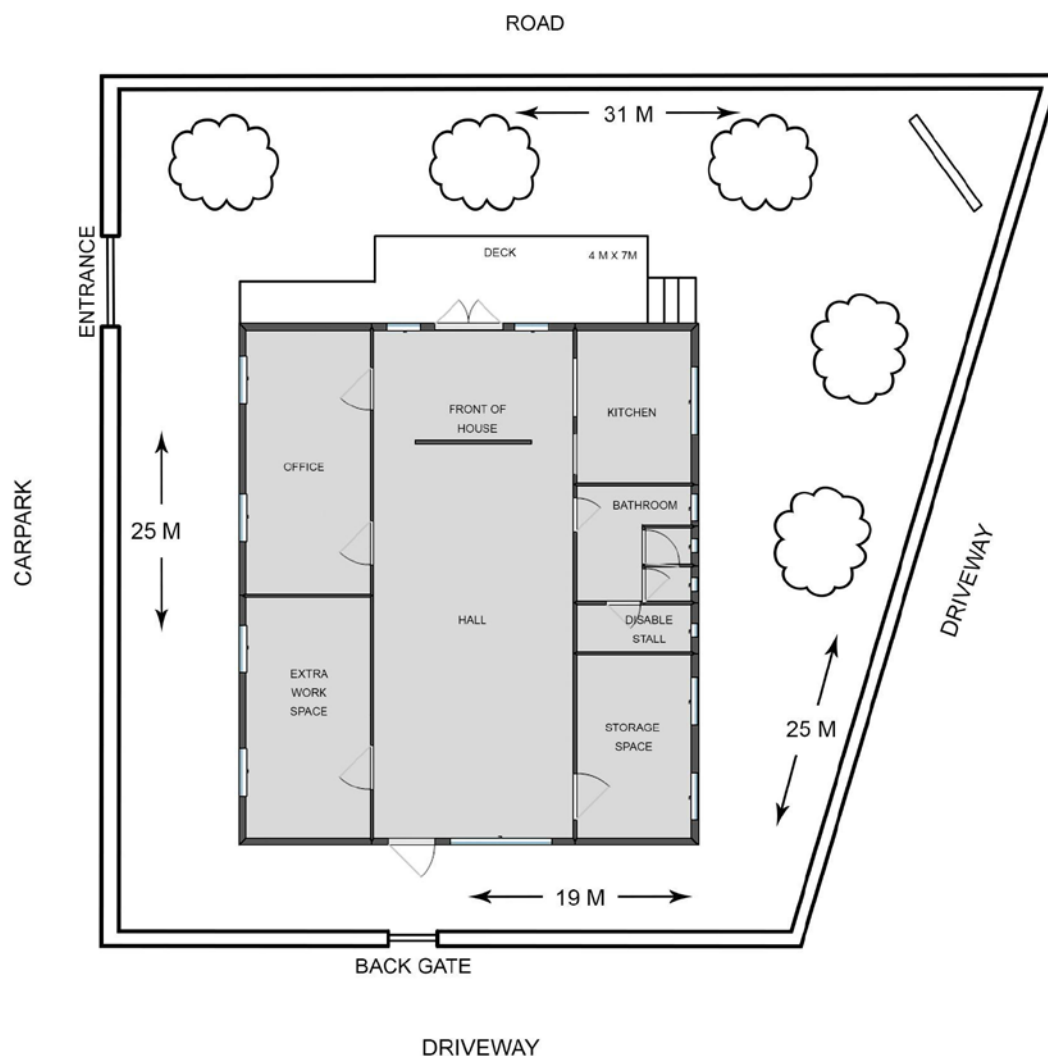
The main hall space will be utilised for community workshops, activities and events. Leaving this space open and accessible to the whole community.



There is an extra office space that would be ideal to convert into an artist studio and allow community members to book it for personal use.



In the last room - this would be utilised as a storage space, being a community organisation and art centre there are always plenty of resources and never enough space to store them. There is also a sink included as a clean up station.



Using this building in a community capacity would mean fencing it off as it is situated in a high traffic area within the park reserve. This is necessary for the health and safety of the community as a whole.

The building would be a fantastic addition and utilised by many groups in the community. The majority of the arts programmes in Huntly are currently run out of church halls and other one off booked spaces. This requires the moving and packing up of often wet art projects and many times resources are not readily available at the locations. Having a dedicated art space for the community's use would solve a lot of these problems and cultivate an even bigger arts culture in our community creating more opportunities for growth and connection through the arts.

Electrical tools and appliances that will be used in the building

- Glue guns
- Sewing Machines
- Projector
- Printer
- Computers
- Jug
- Fridge
- Microwaves
- Stove
- Extraction fan
- Lights
- Speakers
- Heat pump
- Alarm system
- Soldering iron
- Irons
- Drill / Power Tools
- Laminator
- Phones