

INITIAL PROPOSAL

JULY 2021



Reshape Waikato

Review of our District's Representation



REPRESENTATION
REVIEW 2020-21

We're reviewing how Waikato District Council represents our communities in time for the 2022 local authority elections.

Council has now decided on an initial proposal for consultation with the community and we would like your views. This booklet has all the information you need to understand the option we're proposing for representation of our District and includes a submission form for you to have your say.

E arotakengia e maatou te tikanga o Te Kaunihera aa Takiwaa o Waikato hei mangai mo oo taatou haponi a mua i te 2022 Pootitanga i ngaa tau takitoru.

Inaaiane, kua whakatauria e Te Kaunihera teetehi whakatakoto tuatahi hei akoako i te haponi. Ko oo maatou hiahia te whakarongo ki oo koutou whakaaro. Kei roto i teenei pukapuka iti, ngaa pitopito koorero katoa e hiahiatia e koutou kia moohio too maatou koowhiringa i te whakaahuahanga oo too taatou takiwaa. Ka urua hoki teetehi puka taapaetanga hei whakahoki koorero i oo koutou whakaaro.

WHAT IS A REPRESENTATION REVIEW?

HE AHA TE AROTAKE WHAKAAHUATANGA?

Every three years elections are held for councils. To make sure we have fair and effective representation at these elections, councils are required by the Local Electoral Act 2001 to review their representation arrangements at least once every six years. Our Council held a representation review in 2018, but feedback was received from the Local Government Commission that we should undertake a more in-depth review for the 2022 elections. The representation review is also required to reflect that Waikato District Council voted to establish Maaori wards for the 2022 local authority elections.

A representation review looks at how many councillors there should be for our District and how they should be elected – deciding whether councillors are elected from wards or ‘at large’ across the whole district, or by a mix of both. It also looks at the boundaries and names of wards, communities of interest and whether or not we should have community boards. A review of representation arrangements also needs to consider our growing population, and ensure that our communities are represented fairly, with each councillor representing about the same number of people.

In reviewing its representation arrangements, councils must provide for “effective representation of communities of interest” (s19T) and “fair representation of electors” (s19V). There are three key factors to carefully consider:

- To identify the district's communities of interest;
- To ensure those communities of interest are effectively represented; and
- To ensure those communities of interest are fairly reflected.

In addition to the representation arrangements, we also considered two other related processes.

- Electoral system: Waikato District Council uses First Past the Post as the electoral system and Council decided to maintain the status quo.
- Maaori wards: there are currently no Maaori wards but Council decided to establish one or more Maaori wards for the 2022 local authority elections.

KEY DATES

EETAHI RAA WHAKAHIRIHIRA



7 JULY 2021 INTIAL PROPOSAL

- Council used feedback from earlier community pre-engagement in 2020 and Councillor workshops to create an initial proposal for representation of our district.



14 JULY- 20 AUGUST 2021 SUBMISSION PERIOD

- This is where you will have the opportunity to make submissions on the initial proposal.



9 SEPTEMBER 2021 HEARING OF SUBMISSIONS

- Council will hear from members of the public who want to speak to their formal submissions on 9 September. It is difficult to gauge how many people wish to speak to their submissions, therefore we have a “reserve date” in place of 10 September.



23 SEPTEMBER 2021 FINAL PROPOSAL

- Council will develop a final proposal for representation of our District after considering your submissions.



29 SEPTEMBER-29 OCTOBER 2021 APPEALS/OBJECTIONS PERIOD

- This is where you can make appeals or objections on the final proposal. If no objections are received, the final proposal will become the confirmed representation arrangement for the 2022 local authority elections.



BY 11 APRIL 2022- LOCAL GOVERMENT COMMISSION

- If any formal appeals or objections on the final proposal are received, then the Local Government Commission review the proposal and the appeals or objections. They will determine how the district will be represented for the 2022 local authority elections.

WHAT WE HAVE NOW

HE AHA KEI A MAATOU I TEENEI WAA

The current representation arrangements for Waikato District Council were confirmed by the Local Government Commission's Determination dated 12 October 2019: (<http://lgc.govt.nz/assets/Uploads/Waikato-District-determination-2020.pdf>).

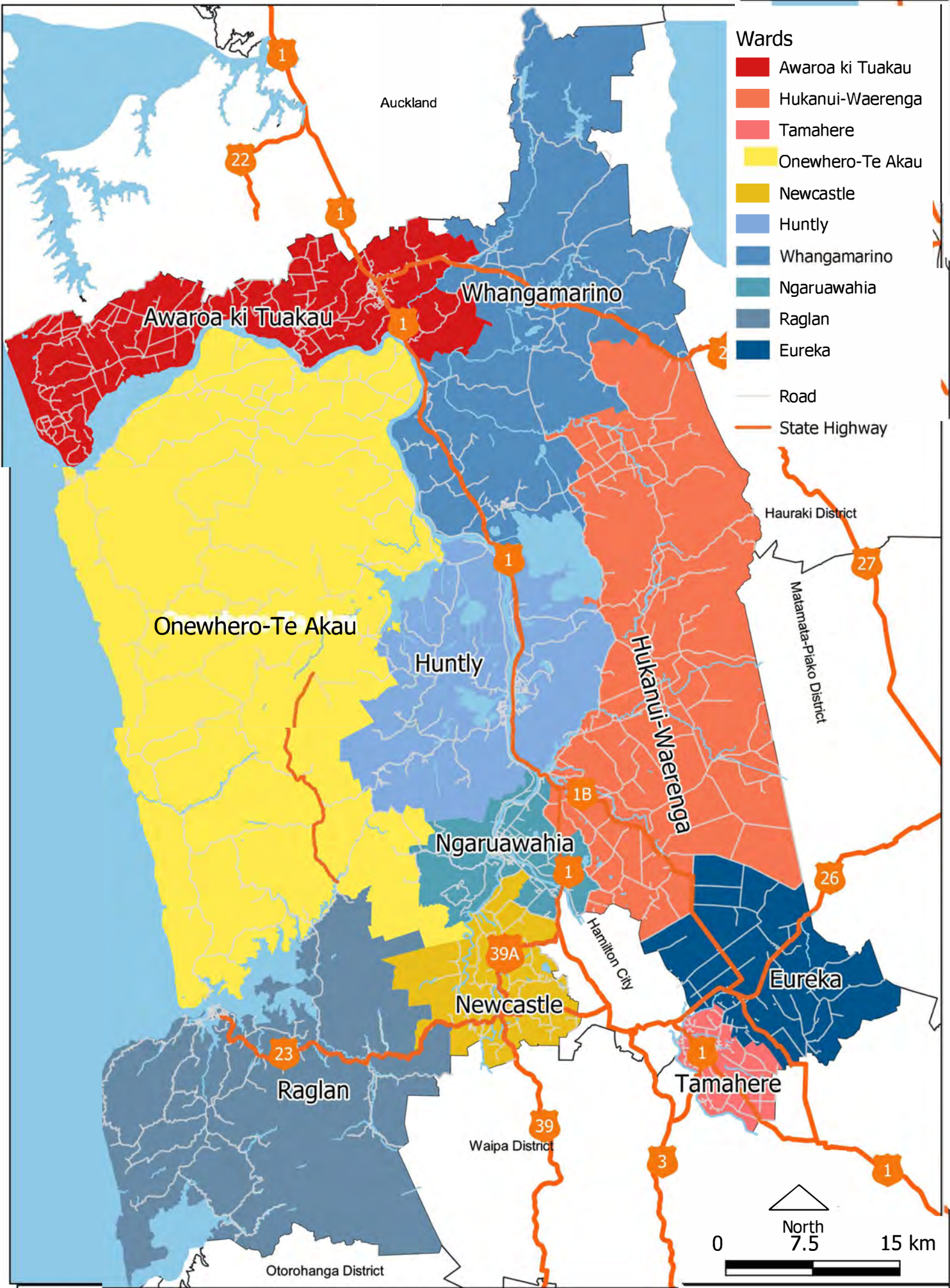
Waikato District Council currently comprises 13 councillors and the Mayor. Councillors are elected from each ward and the Mayor is elected at large. The District is currently divided into 10 wards, with five community boards.

| WARDS | COUNCILLOR(S) |
|------------------|---------------|
| Awaroa ki Tuakau | 2 |
| Eureka | 1 |
| Hukanui-Waerenga | 1 |
| Huntly | 2 |
| Newcastle | 1 |
| Ngaruawahia | 2 |
| Onewhero-Te Akau | 1 |
| Raglan | 1 |
| Tamahere | 1 |
| Whangamarino | 1 |

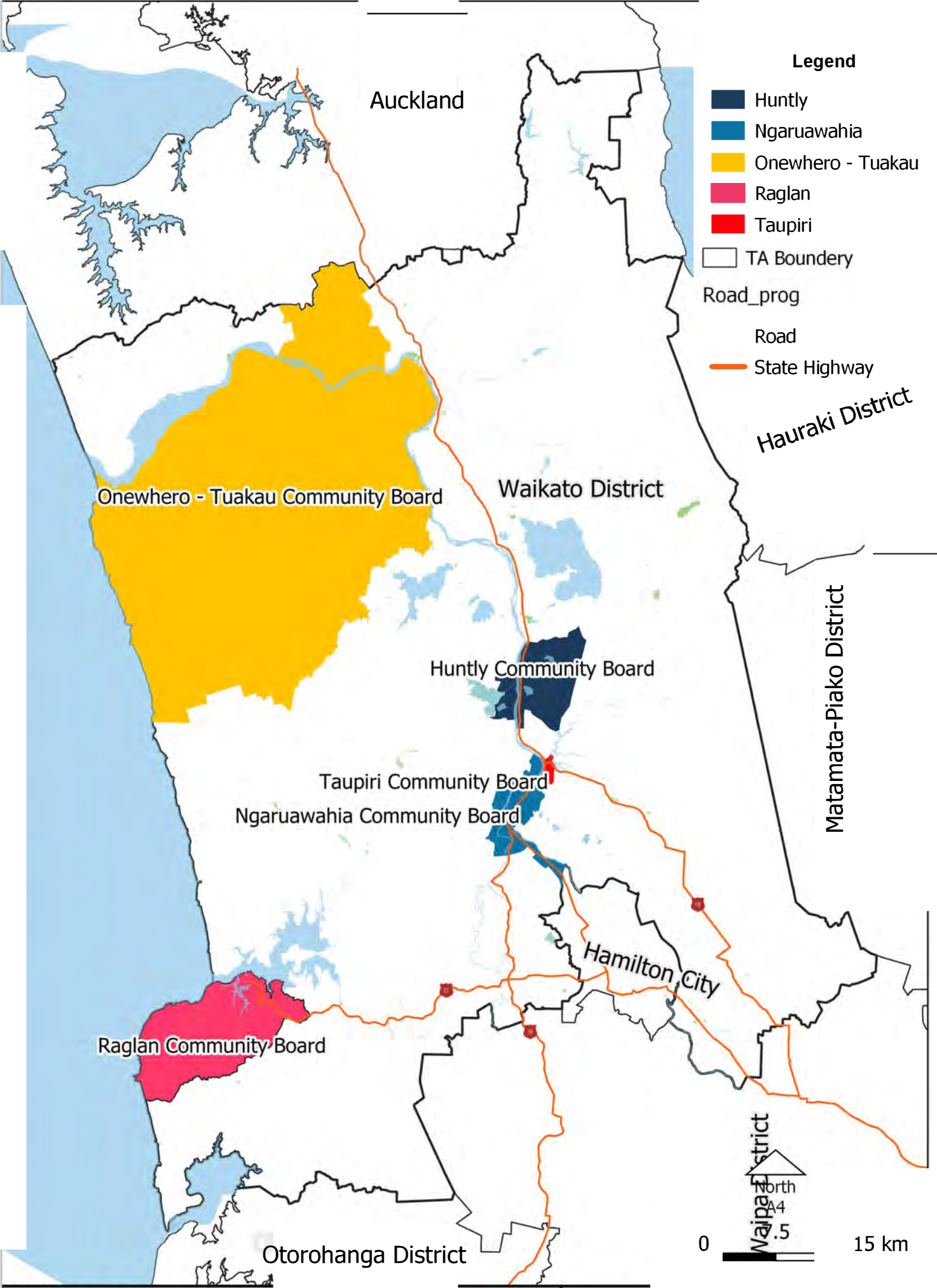
| COMMUNITY BOARDS | ELECTED MEMBERS |
|------------------|-----------------|
| Huntly | 6* |
| Ngaruawahia | 6* |
| Onewhero-Tuakau | 6* |
| Raglan | 6* |
| Taupiri | 6* |

*Each community board also has one/two Councillors appointed

CURRENT WARD BOUNDARIES



CURRENT COMMUNITY BOARD BOUNDARIES



WHAT YOU'VE TOLD US

In 2020, a programme of early community engagement took place to collate views on communities of interest and representation arrangements in the district. An informal survey was held between August and November 2020 asking the community for feedback on the way our Council represents the district. We also held a number of focus/stakeholder groups which included 43 communities within our district.

The key messages that we received were:

- There is a need for amending current representation arrangements (which is in line with the Local Government Commission recommendations from the Council's previous representation review).
- The preferred number of councillors was between 14 and 16.
- The preferred number of wards was between 6 and 8 (with a possible option of having some councillors elected at large).
- Community Boards are popular forms of local representation and the area they cover could be increased.

WHAT WE LOOKED AT

Based on community, iwi, hapu and elected members feedback, we looked at five different options and we have tested all of those options against the requirements of the Local Electoral Act 2001.

In developing these options, we considered:

- The number of councillors we should have.
- How councillors are elected (by ward or district wide).
- How many people are represented by each councillor.
- Whether our communities would be fairly and effectively represented.
- How many wards we should have and the names of these wards.
- How one or more Maaori wards will be structured.
- Whether any changes to wards or ward boundaries are needed.
- Whether we should establish new, and/or retain or remove current, community boards as well as the names and boundaries of any boards.

You can find additional information on what the Council considered, including the options, in the 7 July 2021 Council report:

<https://www.waikatodistrict.govt.nz/events/past-events/event/2021/07/06/default-calendar/council-extraordinary-meeting>

WHAT WE'RE PROPOSING

E WHAKATAKOTORIA ANA E MAATOU



After considering the different options, Council is recommending the following representation for our district:

COUNCILLORS

We are proposing:

13 councillors in total: 11 general ward councillors elected from seven wards, two Maaori ward councillors elected by one district-wide ward, plus the Mayor elected at large.

WARDS

We are proposing:

Eight wards in total: seven general wards and one district-wide Maaori ward. More information of each of the proposed wards, including maps showing the proposed ward boundaries are continued on pages 11-18, along with our reasoning listed below. Information on the proposed Maaori ward is detailed on page 19.

- The Central general ward (page 12) takes into account urban communities that are established along the Waikato River (previously Huntly and Ngaruawahia wards, excluding Horotiu). The following communities are part of the Central Ward - Huntly, Ngaruawahia, Ohinewai, Rotongaro, Rotowaru, and Taupiri.
- The Pokeno-Hunua general ward (page 13) takes into account the growing population in the northern part of the district and communities of interest with shared connections to Auckland. The communities within this ward are - Pokeno, Hunua Ranges (portion) Mangatawhiri, Mangatangi and Mercer.
- The Port Waikato general ward (page 14) takes into account the rural dimension of communities of interest located on the North-Western side of the District. The following communities are part of the Port Waikato Ward - Aka Aka, Glen Murray, Matira, Naike, Otaua, Onewhero, Port Waikato, Pukekawa-Opuatia, Ruawaro, Te Akau, Te Kohanga, Waikeretu, Waikokowai and Waiuku-Karioitahi.
- The Tuakau general ward (page 15) takes into account the growing population in the northern part of the district and communities of interest with shared connections to Auckland. The only community in this ward is Tuakau, but borders on the Buckland and Pokeno communities also.

- The Waerenga-Hukanui general ward (page 16) takes into account the rural dimension of communities of interest located on the eastern side of the district. The following communities are part of the Waerenga-Hukanui Ward - Eureka, Gordonton, Hampton Downs, Hautapu, Maramarua, Meremere, Miranda, Orini-Tauhei, Pukemoremore, Rangiriri, Te Hoe, Te Kauwhata, Waerenga, Waiterimu-Matahuru Whangamarino, and Whitikahu.
- The Whaingaroa general ward (page 17) takes into account communities of interests centred around Raglan and the rural communities in the south-western part of the district. The following communities are part of the Whaingaroa ward - Glen Afton, Glen Massey, Makomako, Okete, Pukemiro, Raglan, Ruapuke, Te Mata, Te Uku, Waingaro, Waitetuna.
- The Tamahere-Newcastle general ward (page 18) takes into account communities of interest that have a strong connection with Hamilton. The following communities are part of the Tamahere-Newcastle Ward - Hautapu, Horotiu, Horsham Downs, Koromatua, Matangi, Puketaha, Rotokauri, Tamahere, Te Kowhai and Whatawhata.

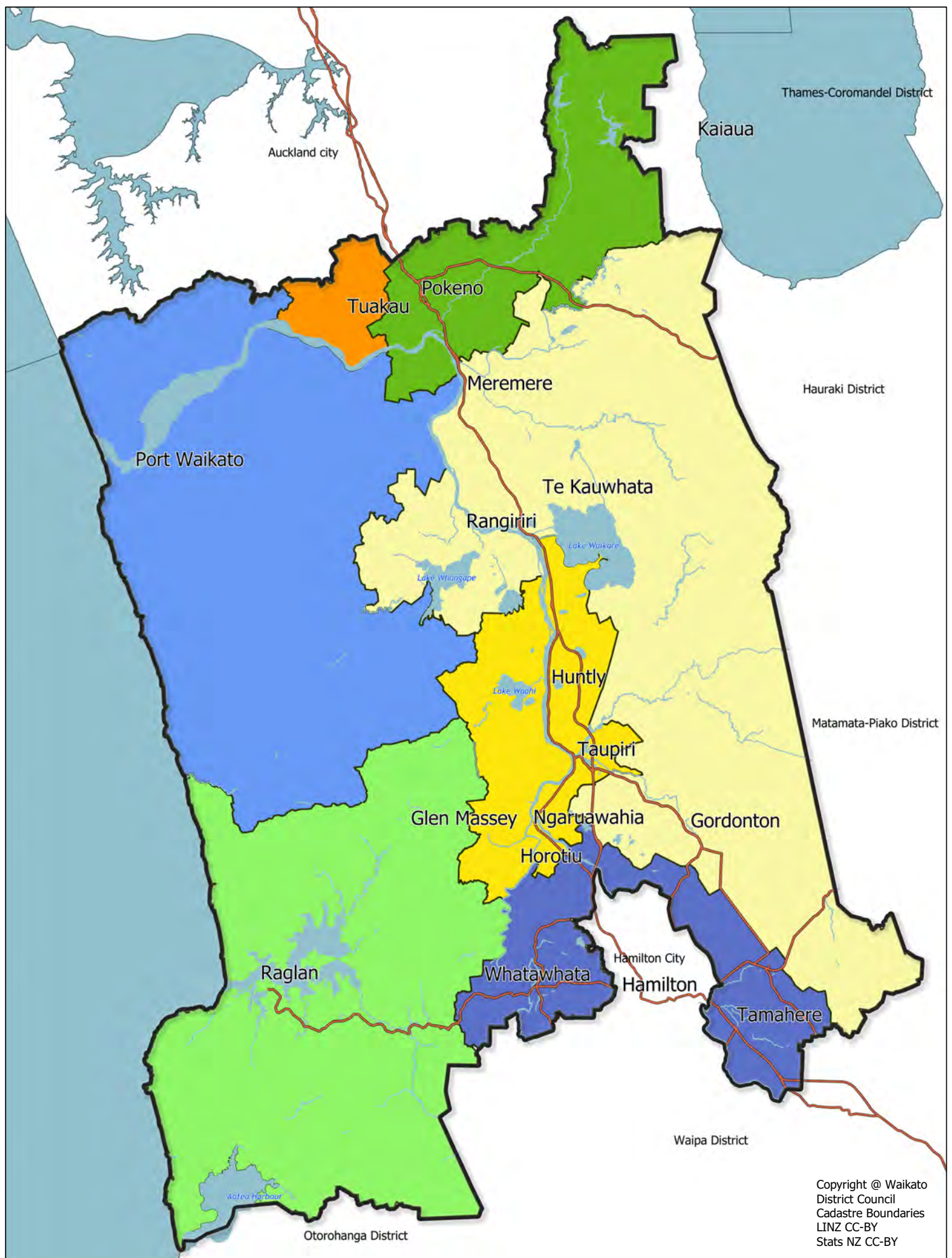
WHY?

Our initial proposal keeps the same number of councillors as what we currently have to ensure effective representation of communities in our district. It also reflects the feedback we received from the early engagement with communities and stakeholders across the district.

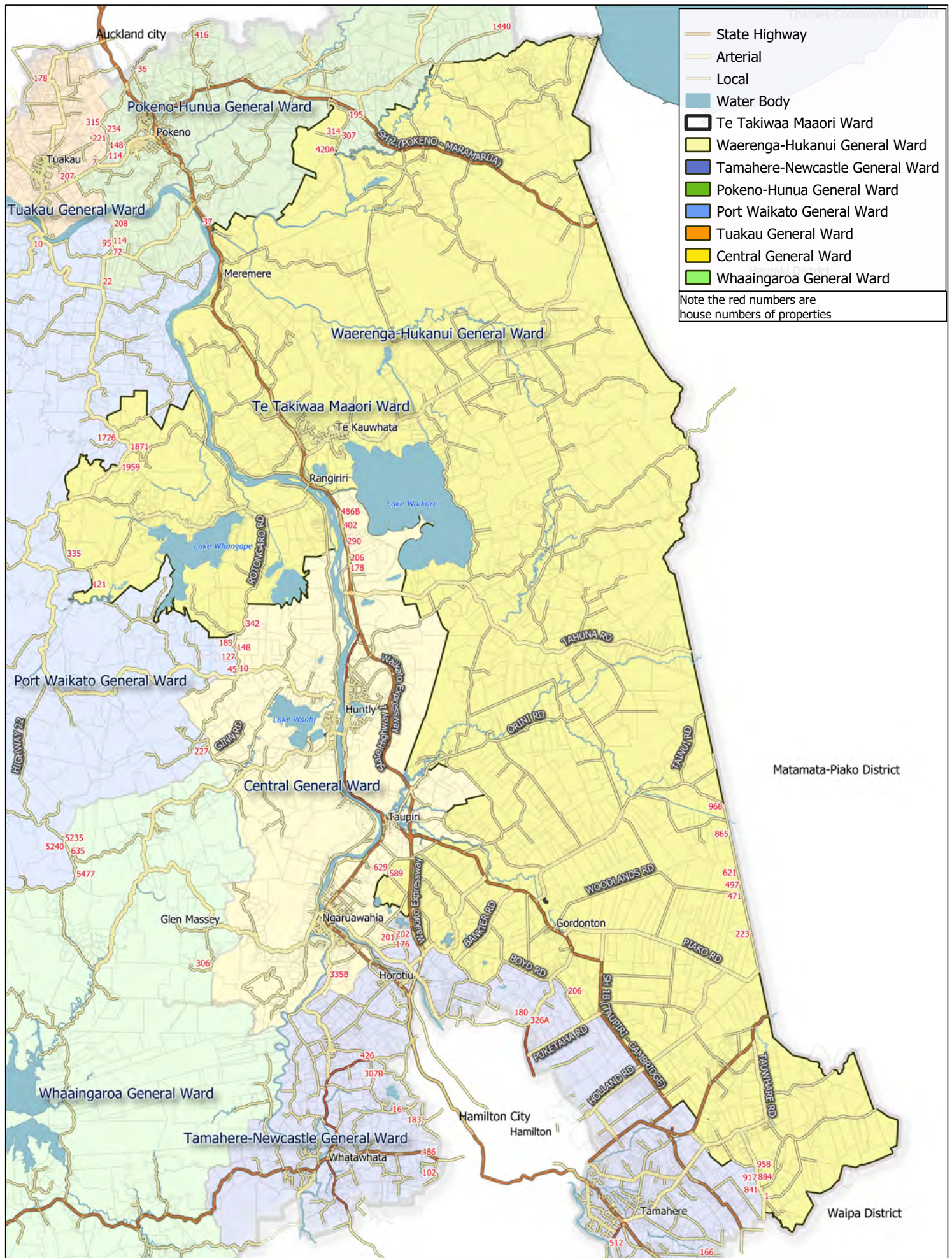
We have changed the boundaries of a number of the wards to reflect the feedback we have already received from the informal consultation on your communities of interest and ensuring there is a separate urban/rural voice.

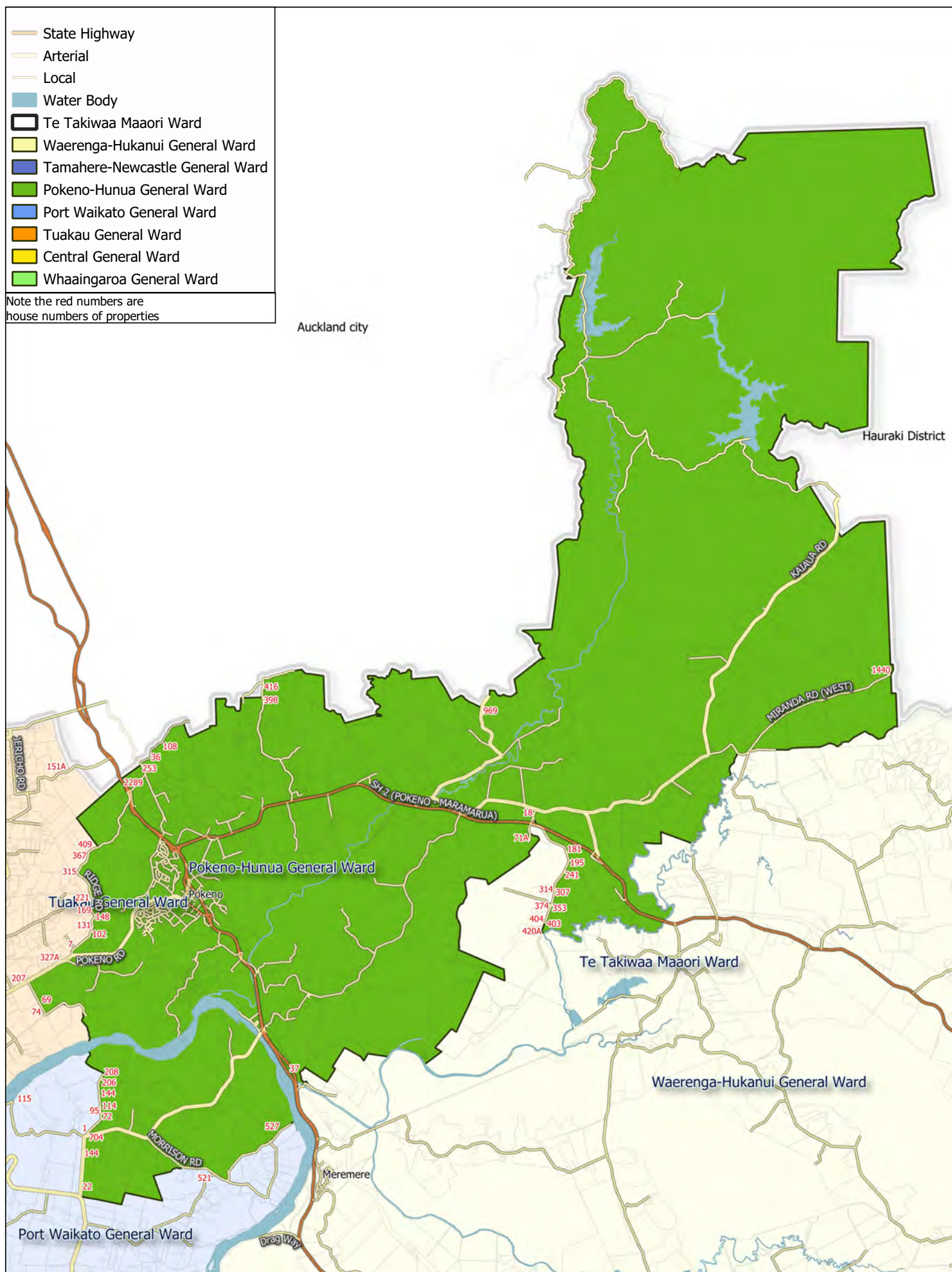
The population that each general ward councillor represents is within the range of 6155 +/- 10% (5,539 – 6,770) in compliance with section 19V(2) of the Local Electoral Act 2001; and the number of Maaori ward councillors complies with Schedule 1A of the Local Electoral Act 2001 as per the table below:

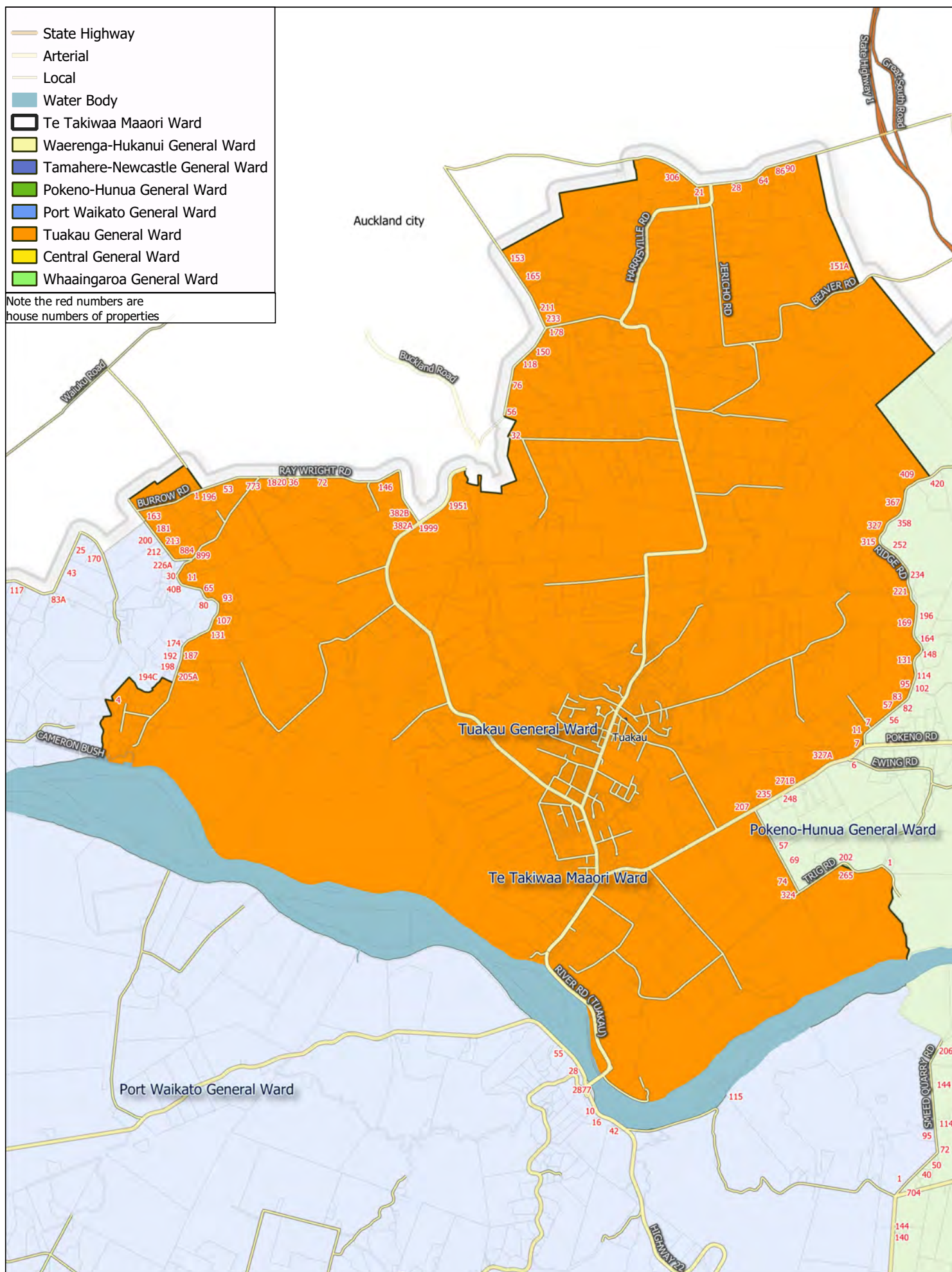
| Ward | Population Estimate (as at 30 June 2020) | Number of Councillors | Population per Councillor | +/- 10% |
|---------------------------------|--|-----------------------|---------------------------|---------|
| Te Takiwaa Maaori Ward | 15,150 | 2 | 7,575 | 100% |
| Central General Ward | 12,400 | 2 | 6,200 | 101% |
| Pokeno-Hunua General Ward | 6,510 | 1 | 6,510 | 106% |
| Port Waikato General Ward | 6,520 | 1 | 6,760 | 106% |
| Tamahere-Newcastle General Ward | 17,150 | 3 | 5,617 | 93% |
| Tuakau General Ward | 6,420 | 1 | 6,180 | 104% |
| Waerenga-Hukanui General Ward | 12,250 | 2 | 6,125 | 100% |
| Whaingaroa General Ward | 6,610 | 1 | 6,155 | 107% |

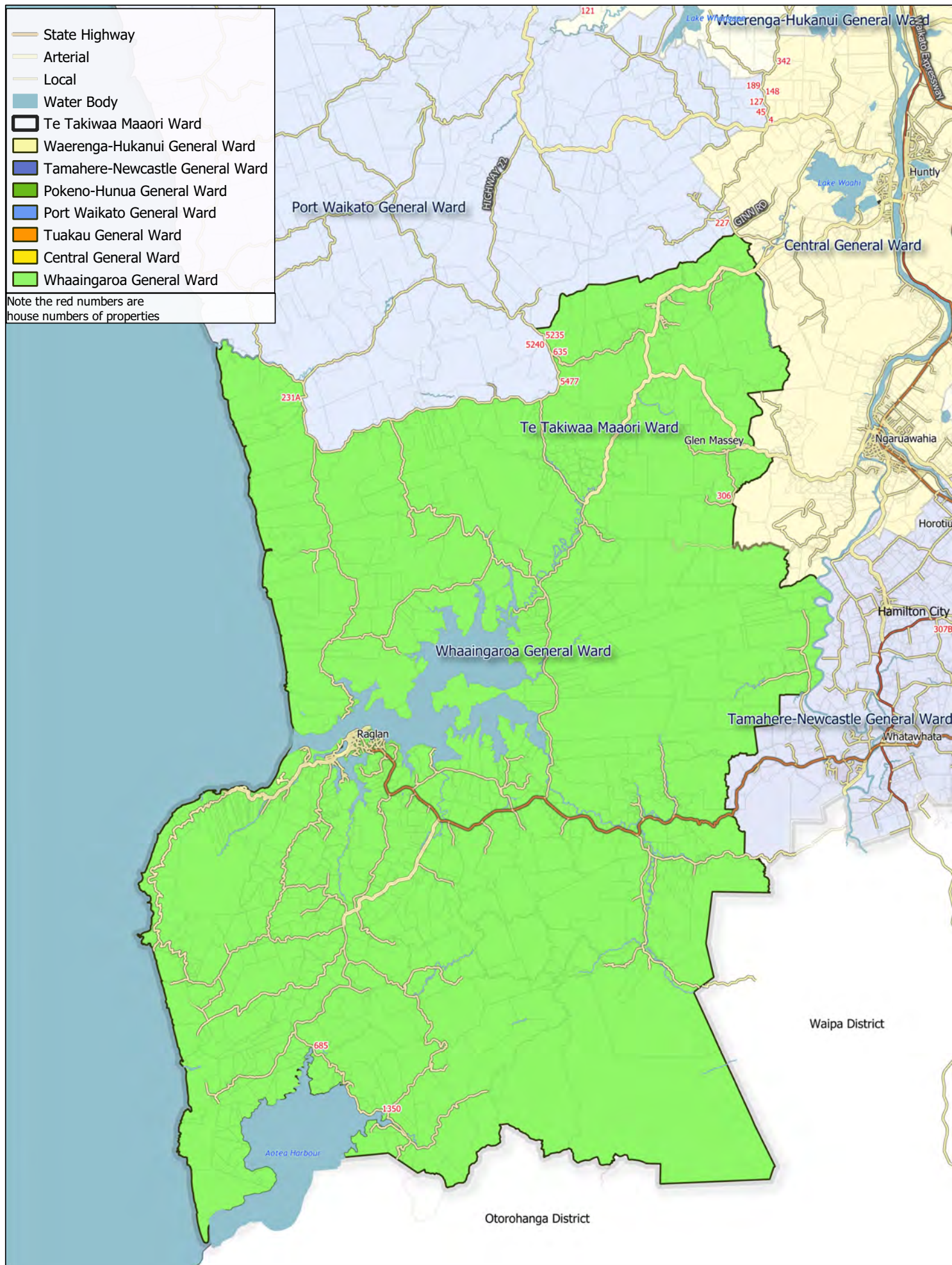


Copyright © Waikato District Council
Cadastre Boundaries
LINZ CC-BY
Stats NZ CC-BY









MAAORI WARD(S) AND REPRESENTATION

We are proposing:

- To establish a Te Takiwaa Maaori Ward - that is one Maaori Ward across our District represented by two Maaori Ward councillors.
- We are seeking feedback from Maaori in the district to find out if this proposal reflects a fair and effective representation of their communities, along with the name they prefer for the proposed Maaori ward. If more than one Maaori ward is preferred, what should the boundaries and maes for those wards be?

WHY?

During the representation review process, the structure and form of Maaori representation was considered by Council and our partner, Waikato-Tainui.

The establishment of one district-wide Maaori Ward was determined as the best option for representation of Maaori across our District.

As with general wards, electors enrolled on the Maaori electoral roll must be fairly and effectively represented. The Local Electoral Act 2001 calculates the number of Maaori ward councillors - with 13.8% of the district being on the Maaori roll. Based on there being 13 councillors in total, there would be two Maaori ward councillors proposed.

The map on the following page shows the boundaries for the Proposed Te Takiwaa Maaori Ward for the district.

Submissions on Maaori wards can only cover:

- the number of Maaori wards (that is, if there should be more than one)
- the boundaries and name(s) of the Maaori ward(s)
- the number of Maaori ward councillors (subject to meeting the requirements of Schedule 1A of the Local Electoral Act 2001).

This proposal cannot, and does not, extend to whether or not there should be any Maaori wards established as that decision has already been made.

COMMUNITY BOARDS

We are proposing:

That we retain the five current community boards, with boundaries being restricted to urban areas and not crossing over ward boundaries to better reflect communities of interest. More information on each of the proposed community boards, including maps showing the proposed boundaries, are displayed on pages 22-26, along with our reasoning listed below:

- Huntly Community Board - small boundary change to the north-west boundary to incorporate residential properties who indicated a desire to be in the area at the last election.
- Ngaruawahia Community Board - small boundary change to incorporate the new urban development mesh blocks at River Terraces and to remove the portion of Horotiu which is now in the Tamahere-Newcastle ward.
- Raglan Community Board - no proposed boundary changes.
- Taupiri Community Board - no proposed boundary changes.
- Tuakau Community Board - restricted to urban boundaries as also reflected in the new Tuakau general ward. Remove rural portion of the existing community board area and seek feedback from the rural communities as to whether they want to establish a community committee instead.

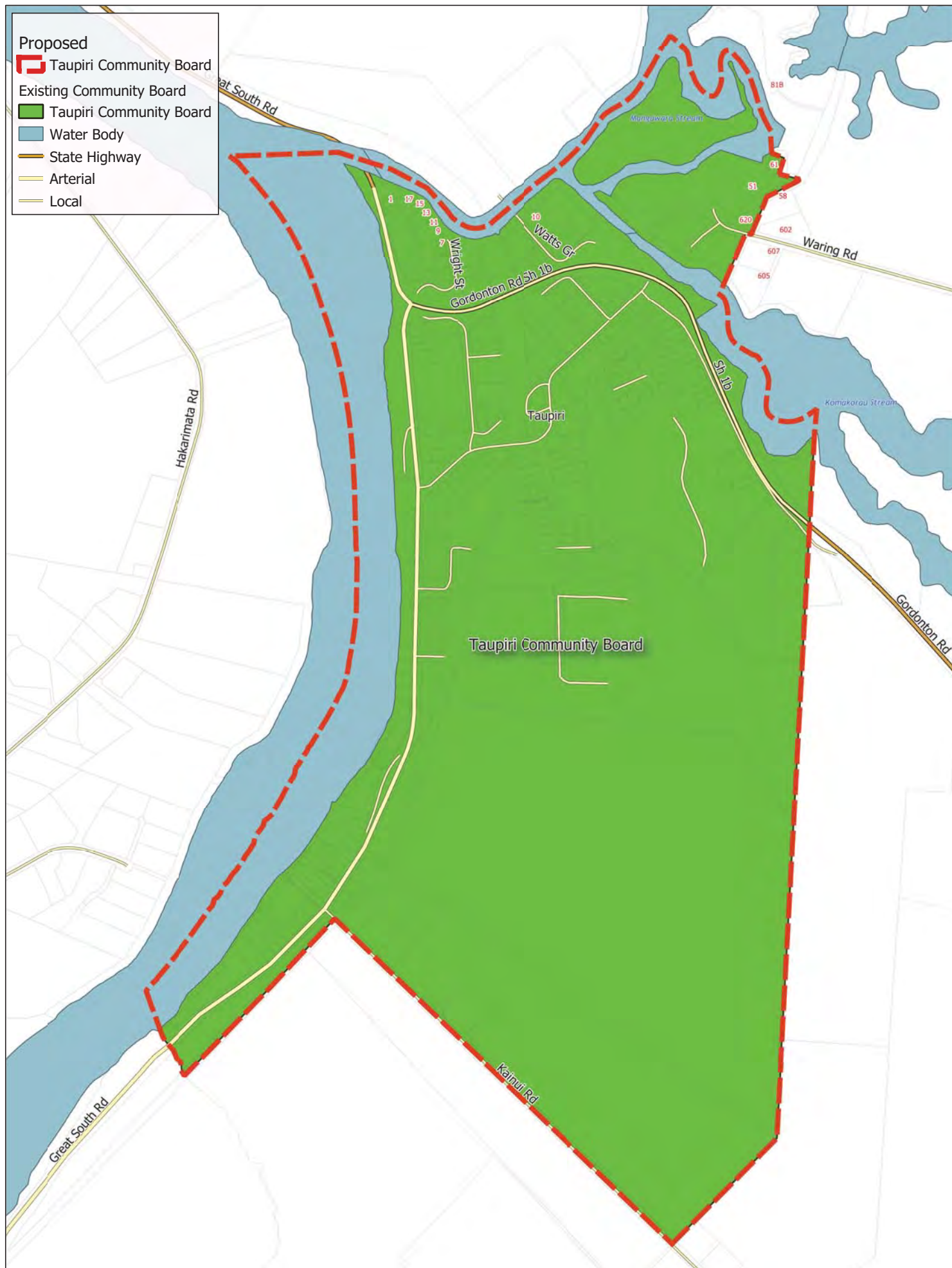
WHY?

The community feedback was that they preferred local representation in urban areas and whilst they supported an increase in numbers for community boards Council need to balance this with other feedback to keep boards within similar communities of interests and urban boundaries. Some boards requested extensions to their existing areas, but Council considered this would incorporate mesh blocks of large areas of rural land, along with urban communities, within community board areas.

Community boards reflect the urban communities of interest and do not cross general ward/urban boundaries.

The changes to the existing Onewhero-Tuakau Community Board reflects the feedback from the urban sector of the community to have more fair and effective representation at board level, given their population and common interests (as compared to the adjoining rural communities).

It is also recognised that the rural portion of the existing board incorporates a number of rural communities which have effective community groups - these communities may prefer to use these community groups as their representative voice, rather than a formal community board. We will meet with the relevant rural communities during the submission period to gauge and collect their views on this issue.



- Proposed
- Raglan Community Board
- Existing Community Board
- Raglan Community Board
- Water Body
- State Highway
- Carpark
- Collector
- Local



Proposed

Tuakau Community Board

Existing Community Board

Onewhero - Tuakau Community Board

Water Body

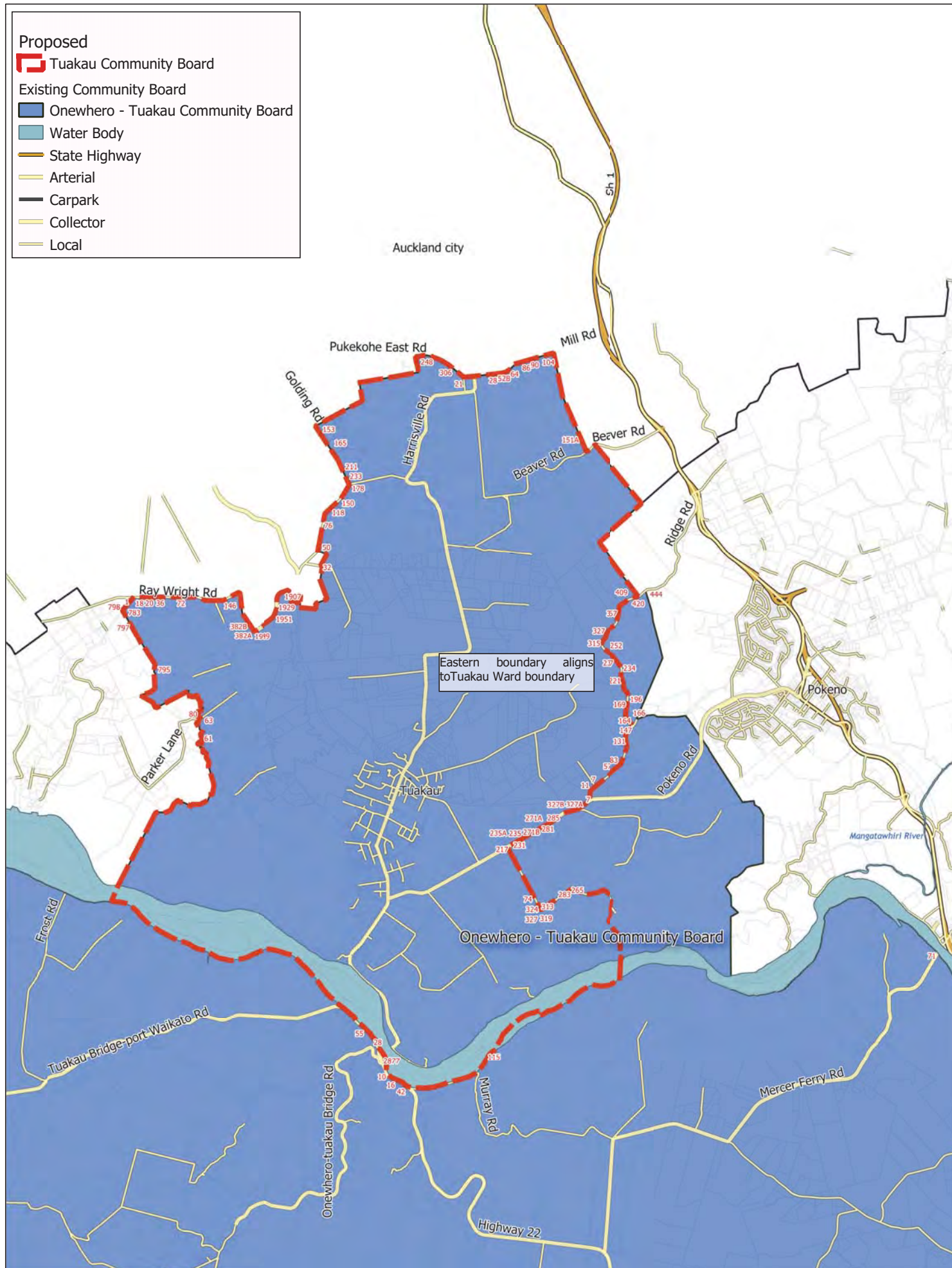
State Highway

Arterial

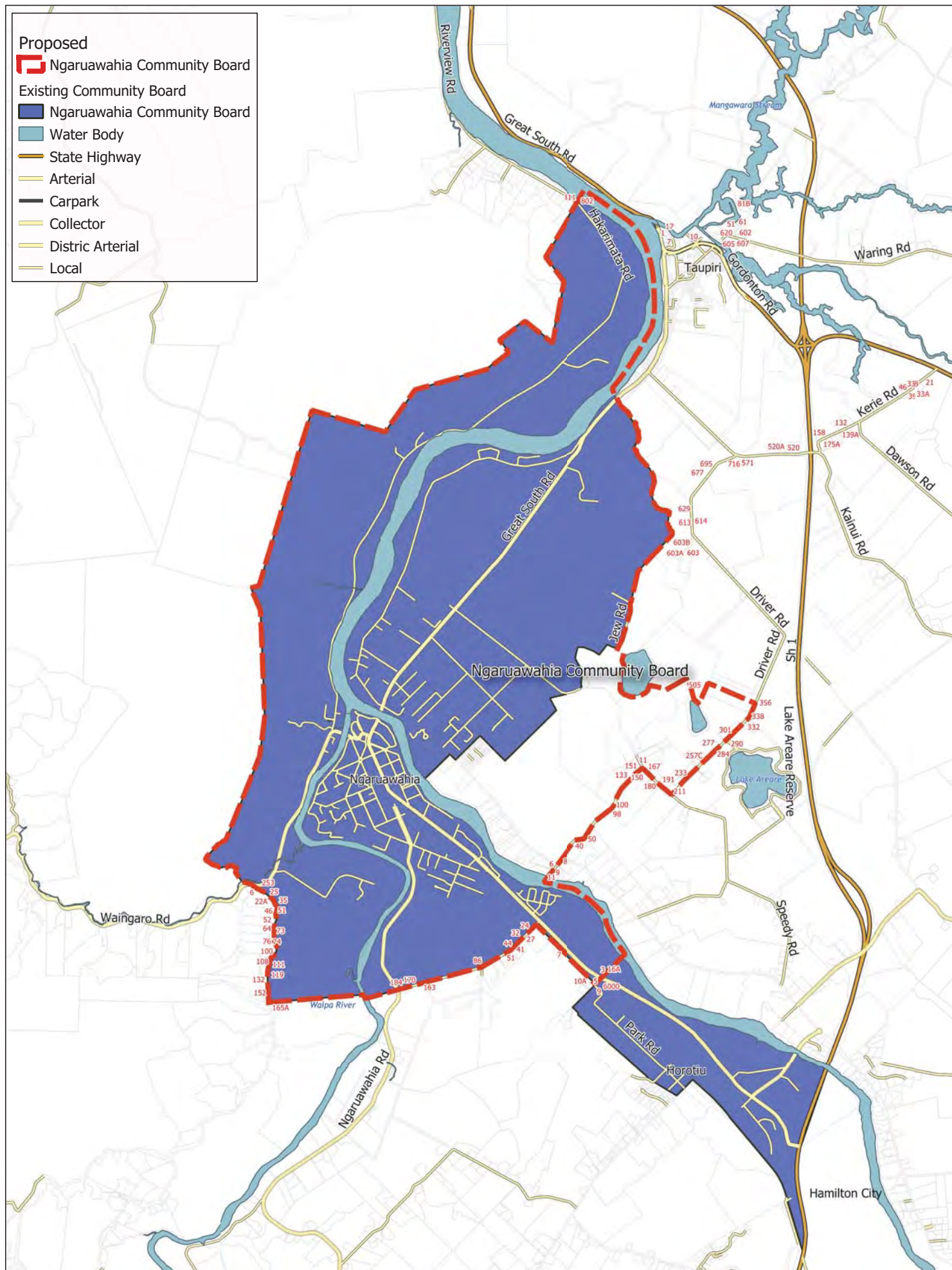
Carpark

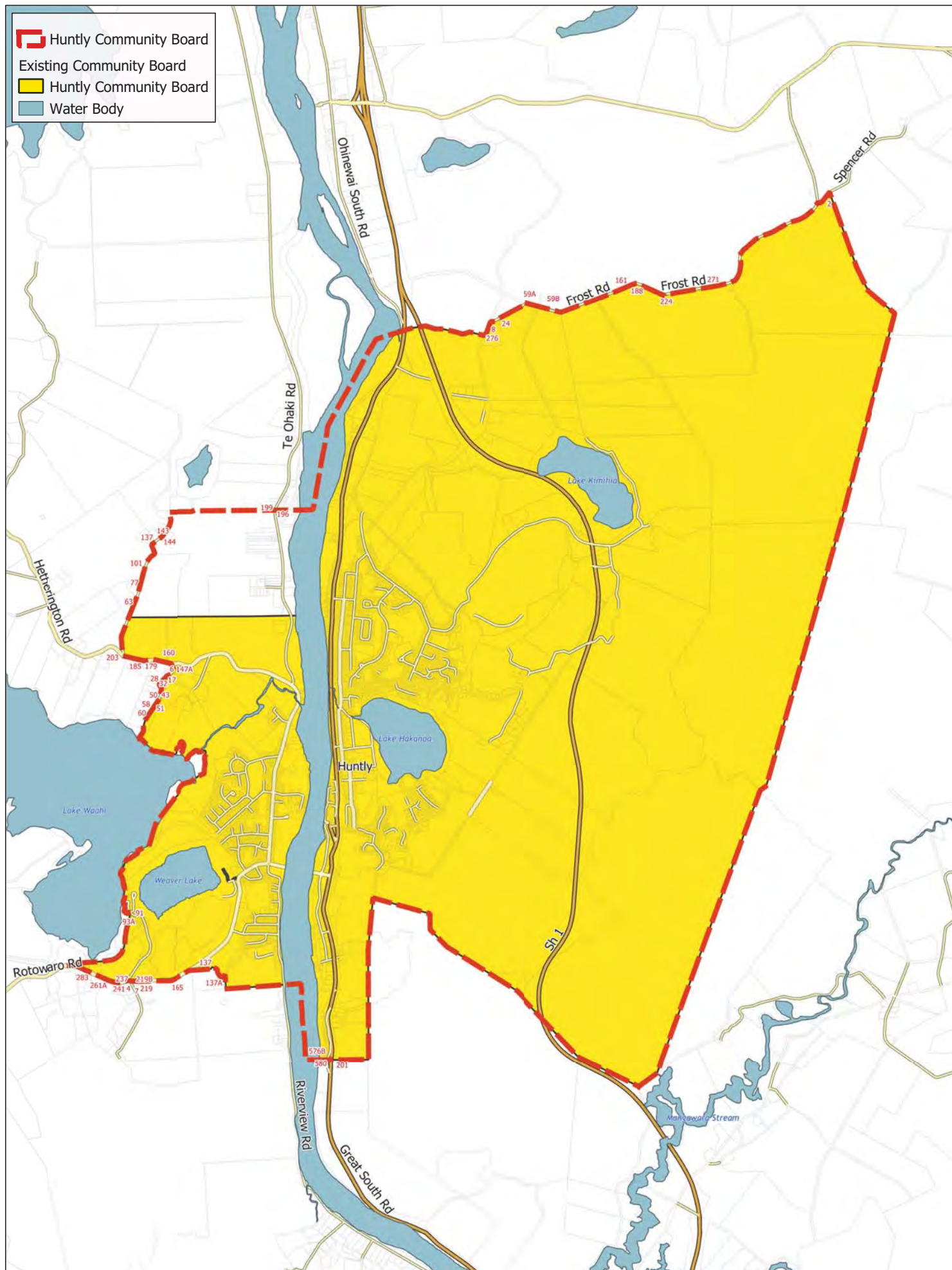
Collector

Local



- Proposed
- Existing Community Board
- Ngaruawahia Community Board
- Water Body
- State Highway
- Arterial
- Carpark
- Collector
- District Arterial
- Local





QUESTIONS AND ANSWERS

EE TAHI PAATAI, EETAHI WHAKAUTU



WHY DID COUNCIL ADOPT THIS PROPOSAL AS ITS INITIAL PROPOSAL?

- It ensures that there is fair representation across the whole district (based on population).
- It aligns with our communities of interest.
- It ensures that our communities of interest are effectively represented.
- It largely reflects community views from our early engagement.
- It complies with the requirements of the Local Electoral Act 2001 for fair and effective representation.

WHAT IS MEANT BY A COMMUNITY OF INTEREST?

A 'community of interest' is the community people associate with most. Waikato District has urban towns surrounded by rural farmland, and coastal communities. We also border two cities, Auckland in the north and Hamilton in the south and neighbouring communities have indicated that their community of interest is closely linked to these cities.

WAS CONSIDERATION GIVEN TO COUNCILLORS BEING ELECTED 'AT LARGE' (ACROSS THE WHOLE DISTRICT RATHER THAN BY WARD)?

Yes, but this doesn't take communities of interest into account and may not ensure effective representation of our rural and coastal communities.

DID COUNCIL CONSIDER CHANGING THE 'FIRST PAST THE POST' VOTING SYSTEM AS PART OF THIS REVIEW?

The voting system is not part of this consultation. Council decided in 2020 to retain the 'First Past the Post' voting system. This will be in place for the 2022 local authority election.

WHAT IS A MAAORI WARD?

Maaori wards are wards where electors enrolled on the Maaori electoral roll for the 2022 elections will vote for and be represented by candidates standing in a Maaori ward. Maaori wards sit alongside the general wards as part of the district's representation arrangements.

WHO CAN STAND FOR ELECTION IN A MAAORI WARD?

Candidates in Maaori wards do not have to be of Maaori descent. Candidates cannot stand for the general and Maaori wards at the same time.

CAN ELECTORS ON THE MAAORI ELECTORAL ROLL VOTE FOR CANDIDATES IN GENERAL WARDS AND VICE VERSA?

No. You can only vote for candidates in the ward you are enrolled in (general or Maaori). All electors from the general and Maaori wards are able to vote for the Mayor.

WHICH ELECTORAL ROLL SHOULD YOU ENROL IN?

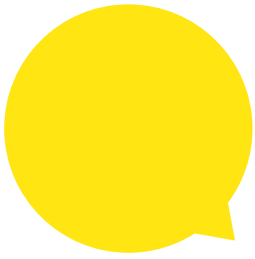
If you are of Maaori descent, you can enroll either in either the general or the Maaori electoral rolls. If you are not of Maaori descent, you can only enroll on the general electoral roll.

DO MAAORI WARD COUNCILLORS ONLY REPRESENT MAAORI?

No. All councillors - whether elected from general or Maaori wards - represent the entire community in our District.

CAN I WAIT AND SEE WHAT THE FINAL PROPOSAL IS BEFORE I MAKE MY VIEWS KNOWN?

If you have a view on the Initial Proposal this is your opportunity to share it. Your view will be taken into account when Council considers submissions on the Initial Proposal in order to formalise the Final Proposal. If you don't like Council's final proposal, you can lodge an appeal to the Local Government Commission. More information on this process will be provided after a final proposal is approved.



HOW TO HAVE YOUR SAY

ME PEEHEA TAAU KOORERO

How you are represented by your local council is an important issue. You can have your say on the initial proposal by making a written submission to Council between Wednesday, 14 July 2021 and 5pm Friday, 20 August 2021.



ONLINE

Visit our website for more information and to make your submission at <https://shape.waikatodistrict.govt.nz/reshape-waikato>



USING THE FORM IN THIS BOOKLET

Complete the form at the end of this booklet and mail to :
Waikato District Council
Private Bag 544
Ngaruawahia 3742

Or deliver to one of our offices listed below:
Waikato District Council

- 15 Galileo Street, Ngaruawahia 3742
- Huntly Office
142 Main Street, Huntly 3700
- Raglan Office
7 Bow Street, Raglan 3225
- Tuakau Office
2 Dominion Rd, Tuakau 2121
- Te Kauwhata Office
1 Main Road, Te Kauwhata 3710



EMAIL

Email to: consult@waidc.govt.nz
Subject heading should read: "Representation Review 2021- Submission"

INFORMATION YOU NEED TO KNOW

- Please print clearly and include all your contact details so that Council can keep in touch with you.
- If you wish to present your submission in person, please make this clear in your written submission.
- Submissions close 5pm Friday, 20 August 2021.
- Submissions will be heard on Thursday, 9 September 2021 (and Friday, 10 September 2021 if required).
- Please note that all submissions will be available to the public and media as they form part of Council's decision-making process. Council will consider all submissions before creating its Final Proposal.
- If the Final Proposal is appealed, the proposal will be sent to the Local Government Commission, where a final decision will be made by 11 April 2022. The decision is final unless there is a judicial review or appeal on a point of law to the High Court. More information about the representation review, including the report and Council resolution, are available at: (insert link here).



Property #

Please tell us why?

MAYOR AND COUNCILLORS

The proposal is to have 13 councillors, comprising 11 general ward councillors and two Maaori ward councillors, together with a Mayor (elected 'at large').

Do you agree with this proposal regarding elected members?

Yes ☐

No ☐

Neutral ☐

Please tell us why?

[illegible]

PROPOSED WARD STRUCTURE

The proposal is to have eight wards in total:

1. Te Takiwaa Maaori Ward (represented by two (2) Maaori ward councillors)
2. Central General Ward (represented by two (2) general ward councillors)
3. Pokeno-Hunua General Ward (represented by one (1) general ward councillor)
4. Port Waikato General Ward (represented by one (1) general ward councillor)
5. Tamahere-Newcastle General Ward (represented by three (3) general ward councillors)
6. Tuakau General Ward (represented by one (1) general ward councillor)
7. Waerenga-Hukanui General Ward (represented by two (2) general ward councillors)
8. Whaaingaroa General Ward (represented by one (1) general ward councillor)

Do you agree with this proposal regarding eight wards?

Yes ☐

No ☐

Neutral ☐

Please tell us why?

Te Takiwaa Maaori Ward

The proposal is to have one ward comprising of the entire Waikato District, which is why we have suggested - Te Takiwaa “The District”.

Do you agree with this proposal regarding the Te Takiwaa Maaori ward?

Yes ☐

No ☐

Neutral ☐

Please tell us why?

[illegible]

Central General Ward

The proposal is to link the towns surrounding the Waikato River into a Central general ward comprising the communities of Huntly, Ngaruawahia, Ohinewai, Rotongaro, Rotowaru, and Taupiri of Huntly, Taupiri and Ngaruawahia.

Do you agree with this proposal regarding the Central general ward?

Yes ☐

No ☐

Neutral ☐

Please tell us why?

[illegible]

Pokeno-Hunua General Ward

The proposal is to group the communities bordering Auckland to the north and Hauraki to the west into the Pokeno-Hunua general ward, comprising the communities of Pokeno, Hunua Ranges (portion), Mangatawhiri, Mangatangi and Mercer.

Do you agree with this proposal regarding the Pokeno-Hunua general ward?

Yes ☐

No ☐

Neutral ☐

Please tell us why?

[illegible]

Port Waikato General Ward

The proposal is to link the rural/coastal communities to the north-west of the District into the Port Waikato general ward, comprising the communities of Aka Aka, Glen Murray, Matira, Naike, Otua, Onewhero, Port Waikato, Pukekawa-Opuatia, Ruawaro, Te Akau, Te Kohanga, Waikeretu, Waikokowai and Waiuku-Karioitahi.

Do you agree with this proposal regarding the Port Waikato general ward?

Yes ☐

No ☐

Neutral ☐

Please tell us why?

[illegible]

Tamahere-Newcastle General Ward

The proposal is to link the towns surrounding Hamilton City and the Waipa District into the Tamahere-Newcastle general ward, comprising the communities of Hautapu, Horotiu, Horsham Downs, Koromatua, Matangi, Puketaha, Rotokauri, Tamahere, Te Kowhai and Whatawhata.

Do you agree with this proposal regarding the Tamahere-Newcastle general ward?

Yes ☐

No ☐

Neutral ☐

Please tell us why?

This image shows a full page of white paper with horizontal dashed lines, typical of primary school writing paper. The lines are evenly spaced and run across the width of the page. There are no margins, text, or other markings on the paper.

Tuakau General Ward

The proposal is to establish a general ward in recognition of the growth and increased population within the Tuakau township.

Do you agree with this proposal regarding the Tuakau general ward?

Yes ☐

No ☐

Neutral ☐

Please tell us why?

[illegible]

Waerenga-Hukunui General Ward

The proposal is to group the rural communities to the West into the Pokeno-Hunua general ward, comprising the communities of Pokeno, Hunua Ranges (portion) Mangatawhiri, Mangatangi and Mercer.

Do you agree with this proposal regarding the Waerenga-Hukunui general ward?

Yes ☐

No ☐

Neutral ☐

Please tell us why?

[illegible]

Whaingaroa General Ward

The proposal is to link the rural/coastal communities to the North-west of the District into the Port Waikato general ward, comprising the communities of Aka Aka, Glen Murray, Matira, Naike, Otatau, Onewhero, Port Waikato, Pukekawa-Opuatia, Ruawaro, Te Akau, Te Kohanga, Waikeretu, Waikokowai and Waiuku-Karioitahi.

Do you agree with this proposal regarding the Whaaingaroa general ward?

Yes ☐

No ☐

Neutral ☐

Please tell us why?

[illegible]

COMMUNITY BOARDS

That we retain the five community boards in total with boundaries being restricted to urban areas and not crossing over ward boundaries which reflect communities of interest.

1. Huntly Community Board - small boundary change to the north-west boundary.no boundary alterations for the Huntly and Taupiri Community Board areas.
2. Ngaruawahia Community Board - small boundary change to incorporate the new urban development mesh blocks at River Terraces and to remove the portion of Horotiu which is now in the Tamahere-Newcastle ward.
3. Raglan Community Board - no proposed boundary changes.
4. Taupiri Community Board - no proposed boundary changes.
5. Tuakau Community Board - restricted to urban boundaries as also reflected in the new Tuakau general ward. Remove rural portion of the existing community board area and consult with the rural communities the possibility of a community committee.

Do you agree with this proposal regarding the community boards?

Yes ☐

No ☐

Neutral ☐

Please tell us why?

This image shows a full page of a handwriting practice worksheet. It consists of multiple rows of horizontal dashed lines spaced evenly down the page, providing a guide for letter height and placement. The background is plain white, and there are no margins or additional markings.

GENERAL COMMENTS

Please note any further comments you have in regard to the Initial Proposal below:

[illegible]

Prefer to do it online?

You can complete the submission form online at www.shape.waikatodistrict.govt.nz/reshape-waikato

Need more information

For more information, visit our website www.shape.waikatodistrict.govt.nz/reshape-waikato

Privacy statement

The contents of your submission (not including your address and contact details) will be made public through Council agendas and as a result will be published on our website. If you would like your name also kept confidential, please let us know on your submission form.